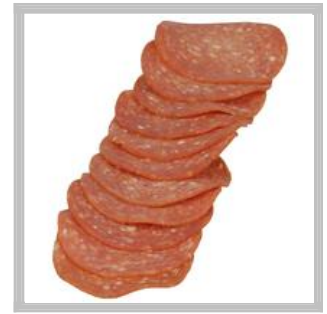




# 10043200150806 - Margherita® Dry Sausage Pepperoni No Char

All Margherita® Dry Sausage Pepperoni brands are driven by the love of meat, ours, yours and, of course, your customers. That's why our offerings are so vast; because we all need our pork and specialty prepared meats our way, everything you need to build your menu, from innovative culinary insights and ideas that help create head turning menu ideas.



Brand: Margherita

## Nutrition Facts

200 servings per container  
**Serving size 15 slices (28g)**

**Amount per serving**  
**Calories 130**

**% Daily Value\***

<b>Total Fat</b> 12g	<b>18%</b>
Saturated Fat 4.5g	<b>23%</b>
Trans Fat 0g	
Polyunsaturated Fat 1g	
Monounsaturated Fat 5g	
<b>Cholesterol</b> 25mg	<b>8%</b>
<b>Sodium</b> 440mg	<b>18%</b>
<b>Total Carbohydrate</b> 1g	<b>0%</b>
Dietary Fiber 0g	<b>0%</b>
Total Sugars 0g	
Includes 0g Added Sugars	
<b>Protein</b> 5g	<b>10%</b>
Vitamin D 14.83mcg 4%	Calcium 9mg 0%
Iron 0.41mg 2%	Potassium 90mg 3%

\* The % Daily Value (DV) tells you how much a nutrient in a serving of food contributes to a daily diet. 2,000 calories a day is used for general nutrition advice.

### Ingredients

Pork, Beef, Salt, Spices, Dextrose, Lactic Acid Starter Culture, Oleoresin of Paprika, Flavoring, Garlic Powder, Sodium Nitrite, Bha, Bht, Citric Acid.

### Case Specifications

GTIN	10043200150806	Case Gross Weight	26.04 LB
UPC		Case Net Weight	25 LB
Pack Size	2/12.5 LB	Case L,W,H	15.81 IN, 11.81 IN, 9.69 IN
Shelf Life	180 Days	Cube	1.05 CF
Tie x High	10 x 7		

### Preparation and Cooking

No preparation required.

### Serving Suggestions

Operators can use in pizza, sandwich, charcuterie, or enjoy by itself.

### Product Features and Benefits

Our Cured Deli Meats and Dry Sausage are made with quality ingredients Great source of protein All of our cooked cured deli meats are gluten free All are minimally processed for authentic flavor One 12.5 lb bag

### Packaging and Storage

Store and use per package instructions

### Product Images



SAP Desc: DSSG,MRGH,PEPP,NCHAR,2/12.5#,FZ