



10043200152671 - Margherita No Charred Pepperoni, Sliced, 2/12.5 lb, Frozen

All Smithfield brands are driven by the love of meat, ours, yours and, of course, your customers. That's why our offerings are so vast; because we all need our pork and specialty prepared meats our way, no one offers more. Smithfield Culinary offers everything you need to build your menu, from innovative culinary insights and ideas that help create head turning menu ideas. Smithfield has set sustainability goals because we believe we can build a more sustainable business and contribute to a better future.

Brand: Margherita



Nutrition Facts

200 servings per container
Serving size 12 slices (28g)

Amount per serving
Calories 130

% Daily Value*

Total Fat 12g	18%
Saturated Fat 4.5g	23%
Trans Fat 0g	
Polyunsaturated Fat 1g	
Monounsaturated Fat 5g	
Cholesterol 25mg	8%
Sodium 440mg	18%
Total Carbohydrate <1g	0%
Dietary Fiber 0g	0%
Total Sugars 0g	
Includes 0g Added Sugars	0%

Protein 5g

Vitamin D 14.83mcg 4%	•	Calcium 9mg 0%
Iron 0.41mg 2%	•	Potassium 90mg 4%
Vitamin A 39.07IU 0%		
Vitamin C 0mg 0%		

* The % Daily Value (DV) tells you how much a nutrient in a serving of food contributes to a daily diet. 2,000 calories a day is used for general nutrition advice.

Ingredients

Pork, Beef, Salt, Spices, Dextrose, Lactic Acid Starter Culture, Oleoresin of Paprika, Flavoring, Garlic Powder, Sodium Nitrite, Bha, Bht, Citric Acid.

Case Specifications

GTIN	10043200152671	Case Gross Weight	26.28 LB
Pack Size	2/12.5 LB	Case Net Weight	25 LB
Shelf Life	180 Days	Case L,W,H	15.63 IN, 11.75 IN, 8.63 IN
Tie x High [Total]	10 x 7 [70]	Cube	0.92 CF

Preparation and Cooking

No preparation required.

Serving Suggestions

Operators can use in pizza, sandwich, charcuterie, or enjoy by itself.

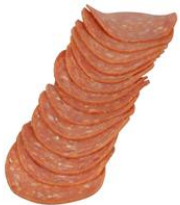
Product Features and Benefits

Our Cured Deli Meats and Dry Sausage are made with quality ingredients and are minimally processed for authentic flavor. All of our cooked cured deli meats are gluten free.

Packaging and Storage

Store and use per package instructions.

Product Images



SAP Desc: DSSG,MRGH,NCHAR,PEPP,2/12.5#