

READY TO COOK BACON

ITEM CODE	PRODUCT DESCRIPTION	\$/CS	CASES	TOTAL
10070247175059	SMITHFIELD RTC BACON, GOLD MEDAL, SINGLE SLICE APPLEWOOD SMOKED, 6-8 SLICES PER LB, 2/10 LB, GAS-FLUSHED	\$2.00		
70800179077	SMITHFIELD RTC BACON, SINGLE SLICE APPLEWOOD SMOKED LOG, PLATINUM, 10-14 SLICES PER LB, 15 LB, GAS-FLUSHED	\$5.00		
70247171986	SMITHFIELD RTC BACON, ENDS & PIECES, 15 LB, FROZEN	\$2.00		
10070247174908	SMITHFIELD RTC BACON, DICED, 3/10 LB, FROZEN	\$2.00		
10070247175073	SMITHFIELD RTC BACON, DICED, 2/5 LB, FROZEN	\$2.00		
70247171962	SMITHFIELD RTC BACON, GOLD MEDAL, APPLE CIDER SINGLE SLICE, 10-14 SLICES PER LB, 15 LB, GAS-FLUSHED	\$2.00		
10070100065459	SMITHFIELD RTC BACON, GOLD MEDAL, APPLEWOOD SMOKED SHINGLE, 14-17 SLICES PER LB, 15 LB, GAS-FLUSHED	\$2.00		
70247171863	SMITHFIELD RTC BACON, GOLD MEDAL, APPLE CIDER SINGLE SLICE, 14-18 SLICES PER LB, 15 LB, GAS-FLUSHED	\$2.00		
70247172761	SMITHFIELD RTC BACON, SILVER MEDAL, HRI DOUBLE SMOKED SINGLE SLICE, 10-14 SLICES PER LB, 30 LB, FROZEN	\$2.00		

FRANKS/HOT DOGS

70247811578	SMITHFIELD BEEF HOT DOGS, GOLD MEDAL, 6/1, 2/5 LB, CHILD NUTRITION, FROZEN	\$2.00		
70247810960	SMITHFIELD BEEF HOT DOGS, GOLD MEDAL, 8/1, 2/5 LB, FROZEN	\$2.00		
70247810953	SMITHFIELD BEEF HOT DOGS, GOLD MEDAL, 4/1, 10 LB, FROZEN	\$2.00		
70247813046	SMITHFIELD BEEF HOT DOGS, GOLD MEDAL, 5/1, 2/5 LB, FROZEN	\$2.00		
70247812544	SMITHFIELD 6" MEAT HOT DOGS, BRONZE MEDAL, 8/1, 10 LB, CHILD NUTRITION, FROZEN	\$2.00		
10070100027129	SMITHFIELD 6" ALL MEAT FRANKS, SILVER MEDAL, 8/1, 2/5 LB, GAS-FLUSHED, CHILD NUTRITION, FROZEN	\$2.00		

SMOKE'NFAST - FULLY COOKED/SMOKED

10070247165371	SMITHFIELD SMOKE'NFAST PULLED PORK SHOULDER, GOLD MEDAL, HICKORY SMOKED, 2/5 LB, FROZEN	\$2.00		
90704051269265	SMITHFIELD SMOKE'NFAST PORK CARNITAS, 6/5 LB, FROZEN, RANDOM WEIGHT	\$2.00		
10704051289045	SMITHFIELD SMOKE'NFAST PULLED PORK, ALL NATURAL, SMOKED, SAUCELESS, 2/5 LB, FROZEN	\$2.00		
10704051269016	SMITHFIELD SMOKE'NFAST SHREDDED PULLED PORK, WITH SAUCE, 2/5 LB, FROZEN	\$2.00		
10704051269047	SMITHFIELD SMOKE'NFAST SHREDDED PORK SHOULDER, SAUCELESS, 2/5 LB, FROZEN	\$2.00		
90704051270223	SMITHFIELD SMOKE'NFAST BEEF BOTTOM ROUND POT ROAST, 2/16 LB, FROZEN, RANDOM WEIGHT	\$2.00		
10704051289359	SMITHFIELD SMOKE'NFAST PULLED CHICKEN, ROASTED, 12/2 LB, FROZEN	\$2.00		
90704051770280	SMITHFIELD SMOKE'NFAST BEEF BOTTOM ROUND POT ROAST, 2/16 LB, FROZEN, RANDOM WEIGHT	\$2.00		
90704051287023	SMITHFIELD SMOKE'NFAST WHOLE BEEF BRISKET, HICKORY SMOKED, 2/8 LB, FROZEN, RANDOM WEIGHT	\$2.00		
10704051287119	SMITHFIELD SMOKE'NFAST SHREDDED BEEF BRISKET, SMOKED, 12/2 LB, FROZEN	\$2.00		
90070100670604	SMITHFIELD SMOKE'NFAST SELECT BOTTOM ROUND POT ROAST, WELL DONE, 2/17 LB, RANDOM WEIGHT	\$2.00		
90046600722150	SMITHFIELD SMOKE'NFAST CHOICE OLD-FASHIONED POT ROAST, 1/10 LB, FROZEN, RANDOM WEIGHT	\$2.00		
10704051289908	SMITHFIELD FULLY COOKED PORK RIB ENDS AND PIECES, SMOKED AND SEASONED, 1/20 LB, FROZEN	\$2.00		

READY TO EAT BACON

ITEM CODE	PRODUCT DESCRIPTION	\$/CS	CASES	TOTAL
10070247125009	SMITHFIELD FULLY COOKED BACON, SILVER MEDAL, SLICED, 0.4 OZ, 300 COUNT, 2/1.605 LB	\$2.00		
10070247172874	SMITHFIELD FULLY COOKED BACON, 1/4 INCH BITS, 2/5 LB	\$5.00		
20043200126631	SMITHFIELD FULLY COOKED BACON, 3/4 INCH BITS, 2/5 LB	\$5.00		
10043200120038	SMITHFIELD FULLY COOKED BACON, 1/2 INCH BITS, 2/5 LB	\$5.00		
10070247172331	SMITHFIELD FULLY COOKED BACON, BRONZE MEDAL, SLICED, 300 COUNT, 2/1.25 LB	\$2.00		
10070247171051	SMITHFIELD FULLY COOKED BACON, GOLD MEDAL, SUPER THICK SLICED, 0.5 OZ, 150 COUNT, 2/2.5 LB, RANDOM WEIGHT	\$2.00		

FRESH SAUSAGE

10070247130102	SMITHFIELD SAUSAGE ROLL, SILVER MEDAL, 58% LEAN, 2/6 LB, FROZEN	\$2.00		
70100020208	SMITHFIELD SAUSAGE ROLL, SILVER MEDAL, 8/3 LB, FROZEN	\$2.00		

PRECOOKED BREAKFAST SAUSAGE

70247138408	SMITHFIELD FULLY COOKED SAUSAGE PATTY, SILVER MEDAL, 2 OZ, 3.875 INCH WIDE, 10 LB, FROZEN	\$2.00		
70247138156	SMITHFIELD FULLY COOKED SAUSAGE PATTY, SILVER MEDAL, 2 OZ, 10 LB, FROZEN	\$2.00		
25468111006	SMITHFIELD FULLY COOKED ORIGINAL SAUSAGE PATTY, SILVER MEDAL, 2 OZ PATTIES, CHILD NUTRITION, 10 LB, FROZEN	\$2.00		
70247138170	SMITHFIELD FULLY COOKED SKINLESS SAUSAGE LINK, SILVER MEDAL, 20/1 LB, 10 LB, FROZEN	\$2.00		
70247138149	SMITHFIELD FULLY COOKED SAUSAGE PATTY, SILVER MEDAL, 1.5 OZ, 10 LB, FROZEN	\$2.00		

SMOKED SAUSAGE

70247135292	SMITHFIELD KIELBASA, GOLD MEDAL, 5/1, 6", 10 LB, FROZEN	\$2.00		
10070247130539	SMITHFIELD SAUSAGE ROPE, GOLD MEDAL, 2/5 LB	\$2.00		
20027815179855	SMITHFIELD SMOK-Y'S ORIGINAL SMOKED SAUSAGE LINK, 10/1.03 LB	\$2.00		
20027815179848	SMITHFIELD SMOK-Y'S CHEDDAR SMOKED SAUSAGE LINK, 10/1.03 LB	\$2.00		
10070247130546	SMITHFIELD KIELBASA ROPE, GOLD MEDAL, 2/5 LB	\$2.00		
20027815179824	SMITHFIELD CHEDDAR SMOKED SAUSAGE LINKS, 6/1.75 LB	\$2.00		
20027815179831	SMITHFIELD JALAPENO & CHEDDAR SMOKED SAUSAGE LINK, 6/1.75 LB	\$2.00		

HAM

20070247196365	SMITHFIELD SLICED HAM, GOLD MEDAL, WATER ADDED, 4/6 LB, VACUUM PACKED	\$2.00		
10070247141610	SMITHFIELD DICED HAM, SILVER MEDAL, SMOKED, WATER ADDED, 1/4 INCH CUBES, 2/5 LB, FROZEN	\$2.00		
10070247129632	SMITHFIELD DICED HAM, SILVER MEDAL, SMOKED, WATER ADDED, 1/2 INCH CUBES, 2/5 LB, FROZEN	\$2.00		
10070247821499	SMITHFIELD BACON, GOLD MEDAL SLICED SMOKED CANADIAN BACON, .75 OUNCE PER SLICE, 6/2 LB, FROZEN	\$2.00		
20043200161472	SMITHFIELD FULLY COOKED JULIENNE HAM WITH NATURAL JUICES, 6/2 LB, FROZEN	\$2.00		



OPERATOR

FEATURED PRODUCTS

OCTOBER 4, 2021—JANUARY 2, 2022

POWER BITES

ITEM CODE	PRODUCT DESCRIPTION	\$/CS	CASES	TOTAL
20070800406115	SMITHFIELD HOMESTYLE POWER BITES, 6/4 OZ	\$2.00		
20070800406153	SMITHFIELD WESTERN STYLE POWER BITES, 6/4 OZ	\$2.00		
20070800406160	SMITHFIELD MEAT LOVERS POWER BITES, 6/4 OZ	\$2.00		
70800182275	SMITHFIELD HOMESTYLE POWER BITES, 2/5 LB, FROZEN	\$2.00		

CARANDO HANDHELDS

20076033351710	CARANDO MEATBALL CALZONE 6 OZ	\$2.00		
20076033351727	CARANDO CHICKEN PARM CALZONE 6 OZ	\$2.00		
20076033351703	CARANDO PEPPERONI AND CHEESE CALZONE 6 OZ	\$2.00		
20076033101957	CARANDO RIP-N-DIP CHEESE 8.5 OZ	\$2.00		
20076033101964	CARANDO RIP-N-DIP PEPPERONI 8.5 OZ	\$2.00		

LUNCHMEAT

ITEM CODE	PRODUCT DESCRIPTION	\$/CS	CASES	TOTAL
10070100011272	SMITHFIELD THIN SLICED HAM, WATER ADDED, 4/3 LB	\$2.00		
20030900325853	SMITHFIELD OVEN ROASTED SLICED TURKEY BREAD, HEALTHY ONES, .50 OZ SLICES, 6/2 LB	\$2.00		
10070247818598	SMITHFIELD SLICED HAM, SMOKED, HAM AND WATER PRODUCT, .5 OZ SLICES, 4/3 LB	\$2.00		
20030900325884	SMITHFIELD SLICED VIRGINIA BRAND HAM, HEALTHY ONES, .5 OZ SLICES, 6/2 LB	\$2.00		
20030900325914	SMITHFIELD SLICED ROAST BEEF, HEALTHY ONES, .5 OZ SLICES, 6/2 LB	\$2.00		

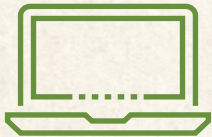


Follow us on Instagram!
@SmithfieldCulinary

Smithfield Culinary Mobile App
Now Available! Download it today!



REDEEM THIS REBATE IN 10 MINUTES OR LESS! SUBMIT ALL THE FORMS ONLINE VIA RAPIDREBATE.NET!



STEP 1

Log on to
RapidRebate.net



STEP 2

Add product info
& upload invoices



STEP 3

Submit &
check status

INSTRUCTIONS FOR SUBMITTING THIS REBATE:

1	Use the grids on the front and back of this page to indicate the number of cases of each product code purchased during the eligible period.
2	Put the total number of cases purchased in the box below.
3	Put the total \$ amount of the requested rebate in the box below.
4	Complete the contact info (below) and segment info (right) and mail the form, along with required printout/invoice copies, to the address at right.

Terms and Conditions:

Offer limited to foodservice operators only. Chain operators must participate as single units. Contracted chain and bid accounts cannot participate. This coupon may be redeemed for a minimum of \$20 up to \$250 per individual foodservice operator. Submit this rebate with copies of distributor invoices or distributor printouts verifying valid products were purchased between October 4, 2021—January 2, 2022. DISTRIBUTOR PRINTOUTS OR INVOICES MUST INCLUDE THE FOLLOWING OPERATOR INFORMATION: Operator Name, Product Purchased, Number of Cases Purchased, Date the Product was Purchased, Invoice Number and Physical Address. Operators must fill out rebate coupon themselves. Distributor tracking reports do not qualify. Bulk redemptions by distributors and/or DSRs are not allowed. Request must be postmarked no later than February 12, 2022. Offer not redeemable in conjunction with any other offer. Operators may submit more than once until the maximum dollar amount is met; however, the initial submission must meet the minimum requirement of \$20. Allow 10–12 weeks for delivery. Incomplete or incorrect submissions will delay payment. Void where restricted, prohibited or banned.

PLEASE MAIL THIS COUPON WITH COPIES OF
DISTRIBUTOR INVOICES TO:

SMITHFIELD CULINARY
TRIO OF TEMPTATIONS COUPON REDEMPTION
PO BOX 552
TRAVERSE CITY, MI 49685

REBATE QUESTIONS? CALL 1-877-570-5504



NOW SUBMIT YOUR
REBATES ONLINE AT
WWW.RAPIDREBATE.NET

COUPON CODE: TOTOPR2I

PLEASE CHECK THE MARKET SEGMENT YOUR OPERATION/TYPE OF RESTAURANT
BELONGS IN:

Are you a new Smithfield Culinary customer
or a current Smithfield Culinary customer

COMMERCIAL

- Full Service
- Casual Theme
- Family
- Upscale/Fine Dining
- C-Store
- Hotel/Motel/Resort

NON-COMMERCIAL

- College/University
- Elementary/Secondary School
- Business & Industry
- Recreational/Entertainment
- Transportation Foodservice
- Military/Correctional

OWNERSHIP

- Independent
- Local/Regional Chain
- National Chain

OWNERSHIP

- Contract Management
- Self-Operated

Number of meals served per day:

_____ Breakfast _____ Lunch _____ Dinner

Approximate dollar volume annual food/beverage purchases: _____

MAXIMUM PAYOUT IS \$250 / MINIMUM PAYOUT IS \$20

# of \$2 CS:	X \$2.00/CS:	= Total \$:
# of \$5 CS:	X \$5.00/CS:	= Total \$:

CHECK WILL BE MAILED TO THE ADDRESS SHOWN BELOW (PLEASE PRINT)

OPERATION NAME:	CONTACT NAME:	
E-MAIL ADDRESS:		
OPERATION ADDRESS:		
CITY:	STATE:	ZIP:
TELEPHONE NUMBER:	FAX NUMBER:	
DISTRIBUTOR:	DSR NAME:	

YOU CAN ALSO SUBMIT OFFER FORM AND COPIES OF INVOICES ONLINE AT WWW.RAPIDREBATE.NET

FOR MORE INFORMATION ON SMITHFIELD CULINARY PRODUCTS, PROMOTIONS, RECIPES OR MARKETING MATERIALS,
CONTACT YOUR SMITHFIELD CULINARY REPRESENTATIVE/BROKER OR CALL 1-888-327-6526 WWW.SMITHFIELDCULINARY.COM/SMITHFIELD