



OPERATOR

FEATURED PRODUCTS

MAY 31–AUGUST 29, 2021



READY TO COOK BACON

ITEM CODE	PRODUCT DESCRIPTION	\$/CS	CASES	TOTAL
70800179077	SMITHFIELD RTC BACON, LOG SMOKED, APPLEWOOD, 10/14, 15 LB, GAS-FLUSHED	\$2.00		
70247158635	SMITHFIELD RTC BACON, GOLD MEDAL, HRI DOUBLE SMOKED SINGLE SLICE, 14-18 SLICES PER LB, 15 LB, GAS-FLUSHED, FROZEN	\$2.00		
70247158642	SMITHFIELD RTC BACON, GOLD MEDAL, HRI DOUBLE SMOKED SINGLE SLICE, 18-22 SLICES PER LB, 15 LB, GAS-FLUSHED, FROZEN	\$2.00		
70247171856	SMITHFIELD RTC BACON, GOLD MEDAL, APPLE CIDER SINGLE SLICE, 18-22 SLICES PER LB, 15 LB, GAS-FLUSHED	\$2.00		
70247171962	SMITHFIELD RTC BACON, GOLD MEDAL, APPLE CIDER SINGLE SLICE, 10-14 SLICES PER LB, 15 LB, GAS-FLUSHED	\$2.00		
10070100065459	SMITHFIELD RTC BACON, GOLD MEDAL, APPLEWOOD SMOKED SHINGLE, 14-17 SLICES PER LB, 15 LB, GAS-FLUSHED	\$2.00		
70247158253	SMITHFIELD RTC BACON, SILVER MEDAL, SINGLE SLICE, 18-22 SLICES PER LB, 15 LB, FROZEN	\$2.00		
70247174833	SMITHFIELD RTC BACON, SILVER MEDAL, APPLEWOOD SMOKED SINGLE SLICE, 14-18 SLICES PER LB, 15 LB, GAS-FLUSHED, FROZEN	\$2.00		
10070100065442	SMITHFIELD RTC BACON, SILVER MEDAL, DOUBLE SMOKED SINGLE SLICE, 10-12 SLICES PER LB, 15 LB, GAS-FLUSHED	\$2.00		
70247758514	SMITHFIELD RTC BACON, BRONZE MEDAL, SLAB SLICED, 10-14 SLICES PER LB, 30 LB, FROZEN	\$2.00		



HOT DOGS & HAMBURGERS

Beef Franks				
70247810953	SMITHFIELD BEEF HOT DOGS, GOLD MEDAL, 4/1, 10 LB, FROZEN	\$2.00		
70247813046	SMITHFIELD BEEF HOT DOGS, GOLD MEDAL, 5/1, 2/5 LB, FROZEN	\$2.00		
70247811578	SMITHFIELD BEEF HOT DOGS, GOLD MEDAL, 6/1, 2/5 LB, CHILD NUTRITION, FROZEN	\$2.00		
Black Angus Burgers				
70247401403	SMITHFIELD BLACK ANGUS GROUND CHUCK PATTIES, GOLD MEDAL, 20/8 OZ, 10 LB, FROZEN	\$5.00		
70247401410	SMITHFIELD BLACK ANGUS GROUND CHUCK PATTIES, GOLD MEDAL, 30/5.33 OZ, 10 LB, FROZEN	\$5.00		
70247404176	SMITHFIELD BLACK ANGUS GROUND BEEF PATTIES, SILVER MEDAL, 40/4 OZ, 10 LB FROZEN	\$2.00		
70247404169	SMITHFIELD BLACK ANGUS GROUND BEEF PATTIES, SILVER MEDAL, 30/5.33 OZ, 10 LB FROZEN	\$2.00		
70247404152	SMITHFIELD BLACK ANGUS GROUND BEEF PATTIES, SILVER MEDAL, 27/6 OZ, 10 LB, FROZEN	\$2.00		
70247404145	SMITHFIELD BLACK ANGUS GROUND BEEF PATTIES, SILVER MEDAL, 20/8 OZ, 10 LB, FROZEN	\$5.00		



HAM

ITEM CODE	PRODUCT DESCRIPTION	\$/CS	CASES	TOTAL
Boneless Ham				
90070247195558	SMITHFIELD CARVEMASTER APPLEWOOD HAM, NATURAL JUICE, 2/7.65 LB, RANDOM WEIGHT	\$2.00		
90070247128600	SMITHFIELD BONELESS HAM, ROUND, WATER ADDED, 2 PC, RANDOM WT	\$2.00		
4X6 Ham				
10070247193770	SMITHFIELD LEAN COOKED HAM, 96% FAT FREE, WATER ADDED, 4X6, 4/13 LB	\$2.00		
10070247193800	SMITHFIELD COOKED HAM, HAM AND WATER PRODUCT, 4X6, 4/13 LB	\$2.00		
10070247193817	SMITHFIELD COOKED HAM, HAM AND WATER PRODUCT, 4X6, 2/13 LB	\$2.00		
10070247193824	SMITHFIELD ROYAL DANISH COOKED HAM, 97% FAT FREE, 4X6, 2/13 LB	\$2.00		
10070247193831	SMITHFIELD COOKED HAM, 95% FAT FREE, WATER ADDED, 4X6, 2/13 LB	\$2.00		
10070247194579	SMITHFIELD LEAN COOKED HAM, 96% FAT FREE, WATER ADDED, 4X6, 2/13 LB	\$2.00		
Diced Ham				
10070247129632	SMITHFIELD DICED HAM, SILVER MEDAL, SMOKED, WATER ADDED, 1/2 INCH CUBES, 2/5 LB, FROZEN	\$2.00		
10070247141610	SMITHFIELD DICED HAM, SILVER MEDAL, SMOKED, WATER ADDED, 1/4 INCH CUBES, 2/5 LB, FROZEN	\$2.00		
Pre Sliced Ham				
10070100011272	SMITHFIELD THIN SLICED HAM, WATER ADDED, 4/3 LB	\$2.00		
10070247818598	SMITHFIELD SLICED HAM, HAM&WATER, 4/3 LB	\$2.00		
20030900325880	SMITHFIELD SLICED HAM, NATURAL JUICE, 6/2 LB, FROZEN	\$2.00		
20043200161472	SMITHFIELD HAM, LUNCHMEAT, NATURAL JUICE, 6/2 LB, FROZEN	\$2.00		
Pit Hams				
90070247126415	SMITHFIELD PIT HAM, SILVER MEDAL, HONEY & BROWN SUGAR, WATER ADDED, 2 PC, RANDOM WT	\$2.00		
90070247128594	SMITHFIELD PIT HAM, SILVER MEDAL, ORIGINAL, WATER ADDED, 2 PC, RANDOM WT	\$2.00		

Visit us at SmithfieldCulinary.com/Smithfield



Follow us on Instagram!
@SmithfieldCulinary

Smithfield Culinary Mobile App
Now Available! Download it today!



CONTINUED ON BACK



OPERATOR

FEATURED PRODUCTS

MAY 31—AUGUST 29, 2021



RTC BREAKFAST SAUSAGE

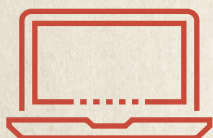
ITEM CODE	PRODUCT DESCRIPTION	\$/CS	CASES	TOTAL
70247131096	SMITHFIELD SAUSAGE LINKS, SILVER MEDAL, 1 OZ LINK, 10 LB, FROZEN	\$2.00		
70247131706	SMITHFIELD SAUSAGE LINK, SILVER MEDAL, 58% LEAN, 2 OZ LINK, 10 LB, FROZEN	\$2.00		
70247130327	SMITHFIELD SAUSAGE LINKS, SKINLESS, SILVER MEDAL, 58% LEAN, 1 OZ LINK, 10 LB, FROZEN	\$2.00		
10070247130102	SMITHFIELD SAUSAGE ROLL, SILVER MEDAL, 58% LEAN, 2/6 LB, FROZEN	\$2.00		



RTE BACON

ITEM CODE	PRODUCT DESCRIPTION	\$/CS	CASES	TOTAL
10043200120038	SMITHFIELD FULLY COOKED BACON, 1/2 INCH BITS, 2/5 LB	\$2.00		
10043200120045	SMITHFIELD FULLY COOKED BACON, TOPPING, 2/5 LB	\$2.00		
10070247172874	SMITHFIELD FULLY COOKED BACON, 1/4 INCH BITS, 2/5 LB	\$2.00		
10070247172881	SMITHFIELD FULLY COOKED BACON, FINE BITS, 2/5 LB	\$2.00		
20027815003402	SMITHFIELD FULLY COOKED BACON, 1/2 INCH BITS, 2/5 LB	\$2.00		
10043200120021	SMITHFIELD FULLY COOKED BACON, APPLEWOOD, BITS, 2/5 LB	\$2.00		
10070800142290	SMITHFIELD FULLY COOKED BACON, 1/4 INCH BITS, 2/5 LB	\$2.00		
20043200126631	SMITHFIELD FULLY COOKED BACON, 3/4 INCH BITS, 2/5 LB	\$2.00		

REDEEM THIS REBATE IN 10 MINUTES OR LESS! SUBMIT ALL THE FORMS ONLINE VIA RAPIDREBATE.NET!



STEP 1

Log on to
RapidRebate.net



STEP 2

Add product info
& upload invoices



STEP 3

Submit &
check status

INSTRUCTIONS FOR SUBMITTING THIS REBATE:

1	Use the grids on the front and back of this page to indicate the number of cases of each product code purchased during the eligible period.
2	Put the total number of cases purchased in the box below.
3	Put the total \$ amount of the requested rebate in the box below.
4	Complete the contact info (below) and segment info (right) and mail the form, along with required printout/invoice copies, to the address at right.

Terms and Conditions:

Offer limited to foodservice operators only. Chain operators must participate as single units. Contracted chain and bid accounts cannot participate. This coupon may be redeemed for a minimum of \$20 up to \$250 per individual foodservice operator. Submit this rebate with copies of distributor invoices or distributor printouts verifying valid products were purchased between May 31–August 29, 2021. DISTRIBUTOR PRINTOUTS OR INVOICES MUST INCLUDE THE FOLLOWING OPERATOR INFORMATION: Operator Name, Product Purchased, Number of Cases Purchased, Date the Product was Purchased, Invoice Number and Physical Address. Operators must fill out rebate coupon themselves. Distributor tracking reports do not qualify. Bulk redemptions by distributors and/or DSRs are not allowed. Request must be postmarked no later than October 9, 2021. Offer not redeemable in conjunction with any other offer. Operators may submit more than once until the maximum dollar amount is met; however, the initial submission must meet the minimum requirement of \$20. Allow 10–12 weeks for delivery. Incomplete or incorrect submissions will delay payment. Void where restricted, prohibited or banned.

PLEASE MAIL THIS COUPON WITH COPIES OF
DISTRIBUTOR INVOICES TO:

SMITHFIELD CULINARY
MORNINGS & MORE COUPON REDEMPTION
PO BOX 552
TRAVERSE CITY, MI 49685

REBATE QUESTIONS? CALL 1-877-570-5504

Smithfield
CULINARY

NOW SUBMIT YOUR
REBATES ONLINE AT
WWW.RAPIDREBATE.NET

COUPON CODE: M&MOPR21

PLEASE CHECK THE MARKET SEGMENT YOUR OPERATION/TYPE OF RESTAURANT
BELONGS IN:

Are you a new Smithfield Culinary customer ☐
or a current Smithfield Culinary customer ☐

COMMERCIAL

- ☐ Full Service
☐ Casual Theme
☐ Family
☐ Upscale/Fine Dining
☐ C-Store
☐ Hotel/Motel/Resort

OWNERSHIP

- ☐ Independent
☐ Local/Regional Chain
☐ National Chain

NON-COMMERCIAL

- ☐ College/University
☐ Elementary/Secondary School
☐ Business & Industry
☐ Recreational/Entertainment
☐ Transportation Foodservice
☐ Military/Correctional

OWNERSHIP

- ☐ Contract Management
☐ Self-Operated

Number of meals served per day:

_____ Breakfast _____ Lunch _____ Dinner

Approximate dollar volume annual food/beverage purchases: _____

MAXIMUM PAYOUT IS \$250 / MINIMUM PAYOUT IS \$20

of \$2 CS: _____ X \$2.00/CS: _____ = Total \$: _____

CHECK WILL BE MAILED TO THE ADDRESS SHOWN BELOW (PLEASE PRINT)

OPERATION NAME:		CONTACT NAME:
E-MAIL ADDRESS:		
OPERATION ADDRESS:		
CITY:	STATE:	ZIP:
TELEPHONE NUMBER:	FAX NUMBER:	
DISTRIBUTOR:	DSR NAME:	

YOU CAN ALSO SUBMIT OFFER FORM AND COPIES OF INVOICES ONLINE AT WWW.RAPIDREBATE.NET

FOR MORE INFORMATION ON SMITHFIELD CULINARY PRODUCTS, PROMOTIONS, RECIPES OR MARKETING MATERIALS,
CONTACT YOUR SMITHFIELD CULINARY REPRESENTATIVE/BROKER OR CALL 1-888-327-6526 WWW.SMITHFIELDCULINARY.COM/SMITHFIELD