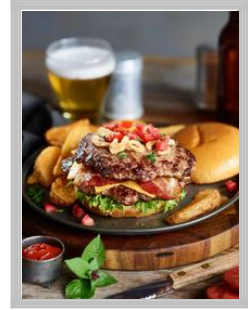




00070247401410 - Smithfield Black Angus Ground Chuck Patties, Gold Medal, 30/5.33 oz, 10 lb, Frozen

All Smithfield brands are driven by the love of meat, ours, yours and, of course, your customers. That's why our offerings are so vast; because we all need our pork and specialty prepared meats our way, no one offers more. Smithfield Culinary offers everything you need to build your menu, from innovative culinary insights and ideas that help create head turning menu ideas. Smithfield has set sustainability goals because we believe we can build a more sustainable business and contribute to a better future.



Brand: Smithfield

Nutrition Facts

30 servings per container

Serving size 1 patty (151g)

Amount per serving
Calories 450

% Daily Value*

Total Fat 38g 58%

Saturated Fat 15g 77%

Trans Fat 3g

Polyunsaturated Fat 0g

Monounsaturated Fat 0g

Cholesterol 105mg 36%

Sodium 80mg 3%

Total Carbohydrate 0g 0%

Dietary Fiber 0g 0%

Total Sugars 0g

Includes 0g Added Sugars 0%

Protein 26g 52%

Vitamin D 0mcg 0% • Calcium 20mg 2%

Iron 2.7mg 15% • Potassium 400mg 10%

Vitamin A 0IU 0%

Vitamin C 0mg 0%

* The % Daily Value (DV) tells you how much a nutrient in a serving of food contributes to a daily diet. 2,000 calories a day is used for general nutrition advice.

Ingredients

Beef

Case Specifications

| | | | |
|------------|----------------|-------------------|-----------------------------|
| GTIN | 00070247401410 | Case Gross Weight | 10.65 LB |
| UPC | | Case Net Weight | 10 LB |
| Pack Size | 1/10 LB | Case L,W,H | 15.50 IN, 10.06 IN, 4.88 IN |
| Shelf Life | 180 Days | Cube | 0.44 CF |
| Tie x High | 10 x 12 | | |

Preparation and Cooking

Cook Raw Patties from frozen: 4oz.-5.33 oz.-6.0oz.-8.0oz. Flat Top Grill/Charbroiler/Convection Oven set at 350.F. Cook 10 to 15 minutes.

Serving Suggestions

Serve as hamburgers, Salisbury steak or beef patty melt.

Product Features and Benefits

For a rich flavor and exceptional quality, look no farther than Black Angus Beef Patties. We grind 100% Black Angus Beef through a 1/8-inch grind before crafting our patties.

Packaging and Storage

Store and use per package instructions.

Product Images



SAP Desc: BF,SFD,GM,GRD,CHUCK,BA,10#,30/5Z