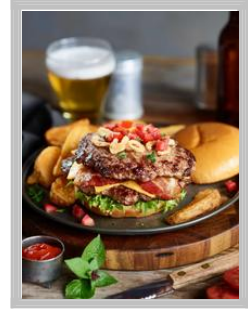




00070247404176 - Smithfield Black Angus Ground Beef Patties, Silver Medal, 40/4 oz, 10 lb Frozen



All Smithfield brands are driven by the love of meat, ours, yours and, of course, your customers. That's why our offerings are so vast; because we all need our pork and specialty prepared meats our way, no one offers more. Smithfield Culinary offers everything you need to build your menu, from innovative culinary insights and ideas that help create head turning menu ideas. Smithfield has set sustainability goals because we believe we can build a more sustainable business and contribute to a better future.

Brand: Smithfield

Ingredients

Beef

Case Specifications

GTIN	00070247404176	Case Gross Weight	10.65 LB
UPC		Case Net Weight	10 LB
Pack Size	1/10 LB	Case L,W,H	15.50 IN, 10.06 IN, 4.88 IN
Shelf Life	180 Days	Cube	0.44 CF
Tie x High	10 x 12		

Preparation and Cooking

Cook Raw Patties from frozen: 4oz.-5.33 oz.-6.0oz.-8.0oz. Flat Top Grill/Charbroiler/Convection Oven set at 350.F. Cook 10 to 15 minutes.

Serving Suggestions

Serve as hamburgers, Salisbury steak or beef patty melt.

Product Features and Benefits

For a rich flavor and exceptional quality, look no farther than Black Angus Beef Patties. We grind 100% Black Angus Beef through a 1/8-inch grind before crafting our patties.

Packaging and Storage

Keep frozen until use.

Product Images



Nutrition Facts

40 servings per container
Serving size 1 patty (113g)

Amount per serving
Calories **360**

% Daily Value*

Total Fat 31g	47%
Saturated Fat 13g	63%
Trans Fat 2.5g	
Cholesterol 80mg	27%
Sodium 60mg	3%
Total Carbohydrate 0g	0%
Dietary Fiber 0g	0%
Total Sugars 0g	
Includes 0g Added Sugars	0%
Protein 19g	38%

Vitamin D 0mcg 0%	Calcium 20mg 2%
Iron 1.8mg 10%	Potassium 290mg 8%
Vitamin A 0IU 0%	
Vitamin C 0mg 0%	

* The % Daily Value (DV) tells you how much a nutrient in a serving of food contributes to a daily diet. 2,000 calories a day is used for general nutrition advice.