

OPERATOR



FEATURED PRODUCTS

JANUARY 31—MAY 1, 2022

SMOKE'NFAST - FULL COOKED/SMOKED

ITEM CODE	PRODUCT DESCRIPTION	\$/CS	CASES	TOTAL
10704051269047	SMITHFIELD SMOKE'NFAST SHREDDED PORK SHOULDER, SAUCELESS, 2/5 LB, FROZEN	\$2.00		
10704051289045	SMITHFIELD SMOKE'NFAST PULLED PORK, ALL NATURAL, SMOKED, SAUCELESS, 2/5 LB, FROZEN	\$2.00		
10704051269016	SMITHFIELD SMOKE'NFAST SHREDDED PULLED PORK, WITH SAUCE, 2/5 LB, FROZEN	\$2.00		
10704051289328	SMITHFIELD SMOKE'NFAST SHREDDED CAROLINA PULLED PORK, HICKORY SMOKED, 4/2.5 LB, FROZEN	\$2.00		
90704051269265	SMITHFIELD SMOKE'NFAST PORK CARNITAS, 6/5 LB, FROZEN, RANDOM WEIGHT	\$2.00		
90704051269302	SMITHFIELD SMOKE'NFAST PORK CARNITAS, ALL NATURAL, 6/4.85 LB, FROZEN, RANDOM WEIGHT	\$2.00		

HAM

90070247128594	SMITHFIELD ORIGINAL PIT HAM, SILVER MEDAL, SMOKED, 2/14 LB, RANDOM WEIGHT	\$2.00		
90070247195558	SMITHFIELD CARVEMASTER APPLEWOOD HAM WITH NATURAL JUICES, GOLD MEDAL, 2/7.65 LB, RANDOM WEIGHT	\$2.00		
10070247193824	FL ROYAL DANISH HAM, 97% FAT FREE, 4X6 WATER ADDED, 2/13 LB	\$2.00		
10070247193831	FL COOKED HAM, 4X6, WATER ADDED, 2/13 LB	\$2.00		
10070247193817	FL COOKED HAM, 4X6, HAM AND WATER, 2/13 LB	\$2.00		

DRY SAUSAGE

10043200154309	MARGHERITA SPICY PEPPERONI, SLICED, 38MM, 2/12.5 LB, GAS-FLUSHED, FROZEN	\$5.00		
20027815220151	MARGHERITA NO CHAR PEPPERONI, SLICED, 14-16 SLICES PER LB, 2/12.5 LB	\$5.00		
20027815220144	MARGHERITA PEPPERONI, SLICED, 14-16 COUNT, 2/5 LB	\$2.00		
20027815220168	MARGHERITA PEPPERONI, COLLAGEN CASING, SLICED, 2/12.5 LB	\$5.00		
20027815220106	MARGHERITA PEPPERONI, SLICED, 14-16 SLICES, 2/12.5 LB	\$5.00		
90038616360174	MARGHERITA SANDWICH SIZED PEPPERONI, 4/4 LB, RANDOM WEIGHT	\$2.00		
90038616366602	MARGHERITA GENOA SALAMI, 3 COUNT, RANDOM WEIGHT	\$2.00		
10076033562430	MARGHERITA PROSCIUTTO, SLICED, 12/1 LB, GAS-FLUSHED	\$2.00		
90076033117070	MARGHERITA PROSCIUTTO, HALF SKINLESS, BONELESS, 2/4.4 LB, RANDOM WEIGHT	\$2.00		
76033114052	MARGHERITA MORTADELLA, SLICED, 12/1 LB, VACUUM PACKED	\$2.00		
20027815001613	MARGHERITA CAPICOLA, SLICED, 5/2 LB	\$2.00		

PRECOOKED SAUSAGE

70247138408	SMITHFIELD FULLY COOKED SAUSAGE PATTY, SILVER MEDAL, 2 OZ, 3.875 INCH WIDE, 10 LB, FROZEN	\$2.00		
70247138156	SMITHFIELD FULLY COOKED SAUSAGE PATTY, SILVER MEDAL, 2 OZ, 10 LB, FROZEN	\$2.00		
25468111006	SMITHFIELD FULLY COOKED ORIGINAL SAUSAGE PATTY, SILVER MEDAL, 2 OZ PATTIES, CHILD NUTRITION, 10 LB, FROZEN	\$2.00		
70247138170	SMITHFIELD FULLY COOKED SKINLESS SAUSAGE LINK, SILVER MEDAL, 20/1 LB, 10 LB, FROZEN	\$2.00		
70247138149	SMITHFIELD FULLY COOKED SAUSAGE PATTY, SILVER MEDAL, 1.5 OZ, 10 LB, FROZEN	\$2.00		

READY TO COOK BACON

ITEM CODE	PRODUCT DESCRIPTION	\$/CS	CASES	TOTAL
70800179077	SMITHFIELD RTC BACON, SINGLE SLICE APPLEWOOD SMOKED LOG, PLATINUM, 10-14 SLICES PER LB, 15 LB, GAS-FLUSHED	\$5.00		
10070247174908	SMITHFIELD RTC BACON, DICED, 3/10 LB, FROZEN	\$2.00		
70247171962	SMITHFIELD RTC BACON, GOLD MEDAL, APPLE CIDER SINGLE SLICE, 10-14 SLICES PER LB, 15 LB, GAS-FLUSHED	\$2.00		
70247171863	SMITHFIELD RTC BACON, GOLD MEDAL, APPLE CIDER SINGLE SLICE, 14-18 SLICES PER LB, 15 LB, GAS-FLUSHED	\$2.00		

READY TO EAT BACON

20043200126631	SMITHFIELD FULLY COOKED BACON, 3/4 INCH BITS, 2/5 LB	\$2.00		
10043200120038	SMITHFIELD FULLY COOKED BACON, 1/2 INCH BITS, 2/5 LB	\$2.00		
10070247172874	SMITHFIELD FULLY COOKED BACON, 1/4 INCH BITS, 2/5 LB	\$2.00		
10070247172331	SMITHFIELD FULLY COOKED BACON, BRONZE MEDAL, SLICED, 300 COUNT, 2/1.25 LB	\$2.00		
10070247125009	SMITHFIELD FULLY COOKED BACON, SILVER MEDAL, SLICED, 0.4 OZ, 300 COUNT, 2/1.605 LB	\$2.00		
10070247171051	SMITHFIELD FULLY COOKED BACON, GOLD MEDAL, SUPER THICK SLICED, 0.5 OZ, 150 COUNT, 2/2.5 LB, RANDOM WEIGHT	\$2.00		

MEATBALLS

20027815001651	ARMOUR FULLY COOKED MEATBALLS, 6/4 LB, FROZEN	\$2.00		
----------------	---	--------	--	--

SMOKED SAUSAGE

10045300662821	SMITHFIELD SMOKED SAUSAGE ROPE, 4/3.25 LB, FROZEN	\$2.00		
10070247130539	SMITHFIELD SAUSAGE ROPE, GOLD MEDAL, 2/5 LB	\$2.00		
40046600028202	SMITHFIELD SMOKED SAUSAGE ROPE, PORK & BEEF, NATURAL CASING, 4/3 LB, FROZEN	\$2.00		
20027815179855	SMITHFIELD SMOK-YS ORIGINAL SMOKED SAUSAGE LINK, 10/1.03 LB	\$2.00		
20027815179848	SMITHFIELD SMOK-YS CHEDDAR SMOKED SAUSAGE LINK, 10/1.03 LB	\$2.00		
10070247130546	SMITHFIELD KIELBASA ROPE, GOLD MEDAL, 2/5 LB	\$2.00		
70247135292	SMITHFIELD KIELBASA, GOLD MEDAL, 5/1, 6", 10 LB, FROZEN	\$2.00		
20027815179824	SMITHFIELD CHEDDAR SMOKED SAUSAGE LINKS, 6/1.75 LB	\$2.00		
20027815179831	SMITHFIELD JALAPENO & CHEDDAR SMOKED SAUSAGE LINK, 6/1.75 LB	\$2.00		
10070247140194	SMITHFIELD SMOKED SAUSAGE, BIAS CUT, 3/3.33 LB, GAS-FLUSHED	\$2.00		

FRANKS/HOT DOGS

70247811578	SMITHFIELD BEEF HOT DOGS, GOLD MEDAL, 6/1, 2/5 LB, CHILD NUTRITION, FROZEN	\$2.00		
70247810960	SMITHFIELD BEEF HOT DOGS, GOLD MEDAL, 8/1, 2/5 LB, FROZEN	\$2.00		
70247810953	SMITHFIELD BEEF HOT DOGS, GOLD MEDAL, 4/1, 10 LB, FROZEN	\$2.00		
70247813046	SMITHFIELD BEEF HOT DOGS, GOLD MEDAL, 5/1, 2/5 LB, FROZEN	\$2.00		
70247812544	SMITHFIELD 6" MEAT HOT DOGS, BRONZE MEDAL, 8/1, 10 LB, CHILD NUTRITION, FROZEN	\$2.00		
10070100027129	SMITHFIELD 6" ALL MEAT FRANKS, SILVER MEDAL, 8/1, 2/5 LB, GAS-FLUSHED, CHILD NUTRITION, FROZEN	\$2.00		

Follow us on social media @SmithfieldCulinary



Visit [SCPizzaPlus.com](https://www.scpizza.com)

Smithfield Culinary Mobile App
Now Available! Download it today!



OPERATOR

Smithfield
CULINARY

FEATURED PRODUCTS

JANUARY 31—MAY 1, 2022

LUNCHMEAT

ITEM CODE	PRODUCT DESCRIPTION	\$/CS	CASES	TOTAL
10070100011272	SMITHFIELD THIN SLICED HAM, WATER ADDED, 4/3 LB	\$2.00		
10070247818598	SMITHFIELD SLICED HAM, SMOKED, HAM AND WATER PRODUCT, .5 OZ SLICES, 4/3 LB	\$2.00		
20030900325884	SMITHFIELD SLICED VIRGINIA BRAND HAM, HEALTHY ONES, .5 OZ SLICES, 6/2 LB	\$2.00		

SPECIALTY CUT HAM

10070247141610	SMITHFIELD DICED HAM, SILVER MEDAL, SMOKED, WATER ADDED, 1/4 INCH CUBES, 2/5 LB, FROZEN	\$2.00		
10070247129632	SMITHFIELD DICED HAM, SILVER MEDAL, SMOKED, WATER ADDED, 1/2 INCH CUBES, 2/5 LB, FROZEN	\$2.00		
10043200160607	SMITHFIELD CANADIAN BACON, GOLD MEDAL, WATER ADDED, 4/3 LB	\$2.00		
90070247127054	SMITHFIELD CANADIAN HAM, GOLD MEDAL, 95% FAT FREE, 4/3.85 LB, RANDOM WEIGHT	\$2.00		
20043200161472	PCI HAM, NATURAL JUICES, 6/2 LB, FROZEN	\$2.00		

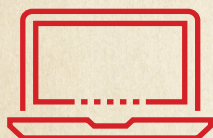
FULLY COOKED RIBS

ITEM CODE	PRODUCT DESCRIPTION	\$/CS	CASES	TOTAL
10070247201468	SMITHFIELD SMOKE'NFAST RIBBITS IN BBQ SAUCE, 2/ 5 LB, FROZEN	\$2.00		
10070247201529	SMITHFIELD SMOKE'NFAST RIBBITS SAUCELESS, 2/5 LB, FROZEN	\$2.00		
90054756002026	SMITHFIELD SMOKE'NFAST ST. LOUIS STYLE RIBS, HICKORY SMOKED, 2/12.2 LB, FROZEN, RANDOM WEIGHT	\$2.00		
90704051261023	SMITHFIELD SMOKE'NFAST COOKED SAUCELESS BABY-BACK LOINBACK RIBS, 8/3 LB, FROZEN, RANDOM WEIGHT	\$2.00		
90704051682026	SMITHFIELD SMOKE'NFAST ST. LOUIS STYLE PORK RIBS, HICKORY SMOKED, 4/5 LB, FROZEN, RANDOM WEIGHT	\$2.00		
90039073681116	KRET FULLY COOKED LOINBACK RIBS, 6/3.75 LB, FROZEN, RANDOM WEIGHT	\$2.00		

POWER BITES

20070800406115	SMITHFIELD HOMESTYLE POWER BITES, 6/4 OZ	\$2.00		
20070800406153	SMITHFIELD WESTERN STYLE POWER BITES, 6/4 OZ	\$2.00		
20070800406160	SMITHFIELD MEAT LOVERS POWER BITES, 6/4 OZ	\$2.00		
70800182275	SMITHFIELD HOMESTYLE POWER BITES, 2/5 LB, FROZEN	\$2.00		

REDEEM THIS REBATE IN 10 MINUTES OR LESS! SUBMIT ALL THE FORMS ONLINE VIA RAPIDREBATE.NET!



STEP 1

Log on to
RapidRebate.net



STEP 2

Add product info
& upload invoices



STEP 3

Submit &
check status

INSTRUCTIONS FOR SUBMITTING THIS REBATE:

1	Use the grids on the front and back of this page to indicate the number of cases of each product code purchased during the eligible period.
2	Put the total number of cases purchased in the box below.
3	Put the total \$ amount of the requested rebate in the box below.
4	Complete the contact info (below) and segment info (right) and mail the form, along with required printout/invoice copies, to the address at right.

Terms and Conditions:

Offer limited to foodservice operators only. Chain operators must participate as single units. Contracted chain and bid accounts cannot participate. This coupon may be redeemed for a minimum of \$20 up to \$250 per individual foodservice operator. Submit this rebate with copies of distributor invoices or distributor printouts verifying valid products were purchased between January 31–May 1, 2022. DISTRIBUTOR PRINTOUTS OR INVOICES MUST INCLUDE THE FOLLOWING OPERATOR INFORMATION: Operator Name, Product Purchased, Number of Cases Purchased, Date the Product was Purchased, Invoice Number and Physical Address. Operators must fill out rebate coupon themselves. Distributor tracking reports do not qualify. Bulk redemptions by distributors and/or DSRs are not allowed. Request must be postmarked no later than June 11, 2022. Offer not redeemable in conjunction with any other offer. Operators may submit more than once until the maximum dollar amount is met; however, the initial submission must meet the minimum requirement of \$20. Allow 10–12 weeks for delivery. Incomplete or incorrect submissions will delay payment. Void where restricted, prohibited or banned.

MAXIMUM PAYOUT IS \$250 / MINIMUM PAYOUT IS \$20

# of \$2 CS:	X \$2.00/CS:	= Total \$:
# of \$5 CS:	X \$5.00/CS:	= Total \$:

CHECK WILL BE MAILED TO THE ADDRESS SHOWN BELOW (PLEASE PRINT)

OPERATION NAME:	CONTACT NAME:	
E-MAIL ADDRESS:		
OPERATION ADDRESS:		
CITY:	STATE:	ZIP:
TELEPHONE NUMBER:	FAX NUMBER:	
DISTRIBUTOR:	DSR NAME:	

PLEASE MAIL THIS COUPON WITH COPIES OF
DISTRIBUTOR INVOICES TO:

SMITHFIELD CULINARY
PIZZA PLUS COUPON REDEMPTION
PO BOX 552
TRAVERSE CITY, MI 49685

REBATE QUESTIONS? CALL 1-877-570-5504

Smithfield
CULINARY

NOW SUBMIT YOUR
REBATES ONLINE AT
WWW.RAPIDREBATE.NET

COUPON CODE: PIZZAPLUSOPR22

PLEASE CHECK THE MARKET SEGMENT YOUR OPERATION/TYPE OF RESTAURANT
BELONGS IN:

Are you a new Smithfield Culinary customer ☐
or a current Smithfield Culinary customer ☐

COMMERCIAL

- ☐ Full Service
☐ Casual Theme
☐ Family
☐ Upscale/Fine Dining
☐ C-Store
☐ Hotel/Motel/Resort

OWNERSHIP

- ☐ Independent
☐ Local/Regional Chain
☐ National Chain

NON-COMMERCIAL

- ☐ College/University
☐ Elementary/Secondary School
☐ Business & Industry
☐ Recreational/Entertainment
☐ Transportation Foodservice
☐ Military/Correctional

OWNERSHIP

- ☐ Contract Management
☐ Self-Operated

Number of meals served per day:

Breakfast _____ Lunch _____ Dinner _____

Approximate dollar volume annual food/beverage purchases: _____

YOU CAN ALSO SUBMIT OFFER FORM AND COPIES OF INVOICES ONLINE AT WWW.RAPIDREBATE.NET

FOR MORE INFORMATION ON SMITHFIELD CULINARY PRODUCTS, PROMOTIONS, RECIPES OR MARKETING MATERIALS,
CONTACT YOUR SMITHFIELD CULINARY REPRESENTATIVE/BROKER OR CALL 1-888-327-6526 WWW.SMITHFIELDCULINARY.COM/SMITHFIELD