



FARMLAND®  
BACON

*Better Process.  
Better Product.*

Defining Delicious:  
Quality  
Consistency  
Variety

*Better Process  
Leads to  
Better Bacon.*



At Farmland<sup>®</sup>, smoke is not a liquid.

*From the first step to the last,  
Farmland® cuts no corners and  
spares no expense to bring  
your customer the absolute  
best bacon available.*



## *Made with the finest raw materials*

---

You can't make quality bacon without quality raw materials. This is why every slice of bacon Farmland produces comes exclusively from corn-fed Midwestern hogs, processed in our own state-of-the-art facilities — keeping us in control of the entire process. All this, plus a stringent hand-selection process and a policy of always using fresh (never frozen) bellies, ensures that our bacon is second to none when it comes to quality.

## *Setting the standard with our process*

---

If it's Farmland Bacon, you can be sure it has real hickory-smoke flavor from real hickory hardwood — we never use liquid smoke as some of our competitors. The result is evenly smoked bacon with a deep mahogany color and a rich, authentic hickory flavor that permeates throughout each delicious slice.

## *The Farmland difference*

---

We carefully hand-trim each belly for consistent sizing.

We always use fresh bellies, meaning better taste than that of our competitors, which are often frozen.

We use natural hardwood chips — they burn evenly for consistent flavor.

Every belly is inspected to ensure a consistent quality.

We use state-of-the-art slicing equipment, which ensures consistent slice thickness.

We have dedicated bacon quality assurance experts on every shift to help guarantee that our customers receive the highest-quality bacon possible every time.

With industry-leading technology and unparalleled expertise, no one delivers consistent slice count and portion control like Farmland. Consistent from plate to plate, state to state, and all across this country, no one makes more delicious bacon than Farmland.

*If your customers demand the absolute best bacon available, trust Farmland to deliver.*

# How Farmland® Bacon is made.

**1** Farmland processes only lean, butcher-type hogs from our facilities, ranging from 250-280 pounds.

**2** The carcass is broken down into primal cuts—hams, bellies, loins, etc.

**3** Bellies are sorted by size and weight.

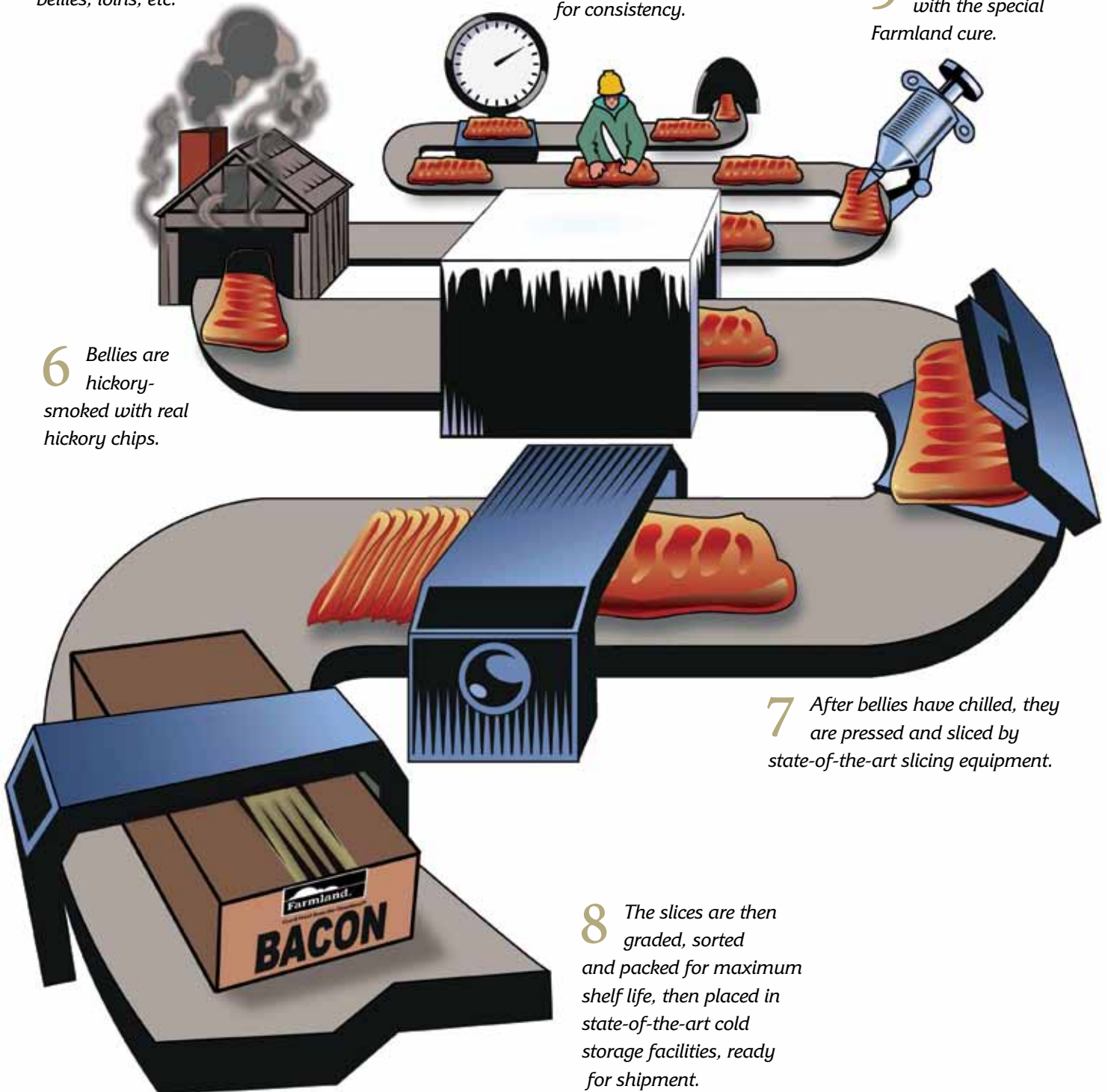
**4** Bellies are hand-trimmed to exact product specifications for consistency.

**5** Bellies are injected with the special Farmland cure.

**6** Bellies are hickory-smoked with real hickory chips.

**7** After bellies have chilled, they are pressed and sliced by state-of-the-art slicing equipment.

**8** The slices are then graded, sorted and packed for maximum shelf life, then placed in state-of-the-art cold storage facilities, ready for shipment.



## FARMLAND® BACON

### Features

Natural hickory smoke

1 PC box

No liquid smoke; no MSG

Made from fresh Farmland pork bellies

Guaranteed slice count

Poly-lined boxes

### Benefits

True country bacon flavor

Reduced chance of bacon crushing

No artificial ingredients; no aftertaste

No frozen bellies

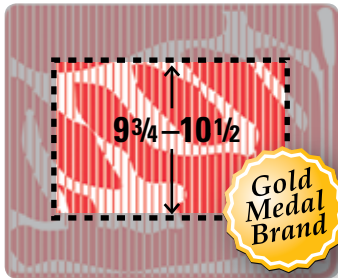
Portion control; greater profit

Minimizes freezer burn



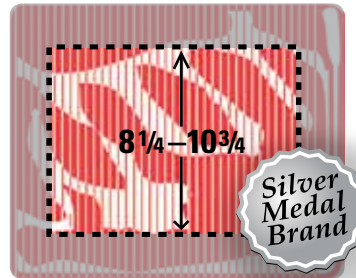
# Farmland® has a bacon for every occasion.

All Farmland Bacon is made fresh from Farmland pork bellies, cured with a special Farmland cure and hardwood-smoked for true bacon flavor. Farmland then grades and sorts the bacon into three value levels – Gold, Silver and Bronze Medal.



## GOLD MEDAL

- Double smoked
- Made from smaller, leaner bellies
- Center cut
- Extra-trimmed for leaner bacon
- Farmland's finest quality bacon for the most discerning customers
- Also available as USDA-certified single-sliced bacon, great for wrapping pork tenderloins or filets, poultry or beef



## SILVER MEDAL

- Farmland's most popular bacon
- Traditional, top-quality bacon
- Trimmed and graded to Farmland's high specifications for leanness, quality and consistency
- Uniform slices
- Wide variety of slice counts for easy applications



## BRONZE MEDAL

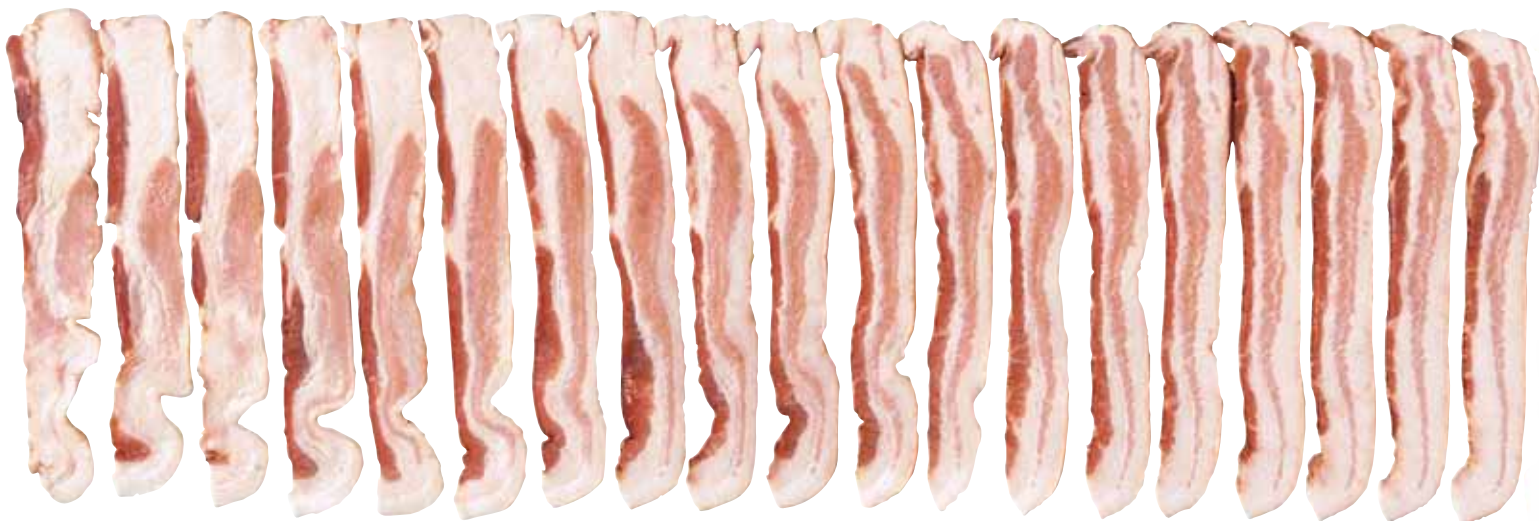
- Same high-quality process
- Sliced from larger bellies to provide competitive pricing

Flank End

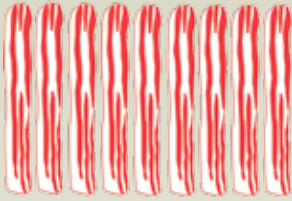
Gold Medal

Silver Medal

Bronze Medal

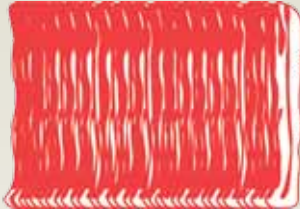


## SLICE OPTIONS



### Single Sliced Bacon

Layout-style bacon on parchment paper for ease of preparation



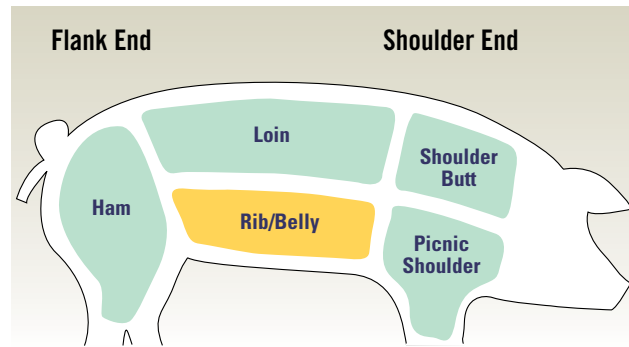
### Shingle Sliced Bacon

Layered bacon for convenient separation of slices



### HRI Sliced Bacon

Sliced slab bacon as an economical choice



Gold Medal

Silver Medal


Bronze Medal

Shoulder End



# Now it's easier to serve even more Farmland® Fully Cooked Bacon.

Great-tasting Farmland Fully Cooked Bacon not only saves time and labor, but also gives you more opportunities to serve bacon on more menu items, all day long. Flavor, versatility and convenience – now that's foodservice.



| FARMLAND BACON |                                       |
|----------------|---------------------------------------|
| Features       | Benefits                              |
| Fully cooked   | Convenient and timesaving preparation |
| Great taste    | Consistent flavor in every case       |
| Versatile      | Increased customer satisfaction       |



## SLICED BACON

70247 125000  
Farmland Fully Cooked Regular Sliced Bacon, 2/150

Actual size



## ROUND BACON

70247 172730  
Farmland Bronze Medal Round Bacon, 2/96

Actual size



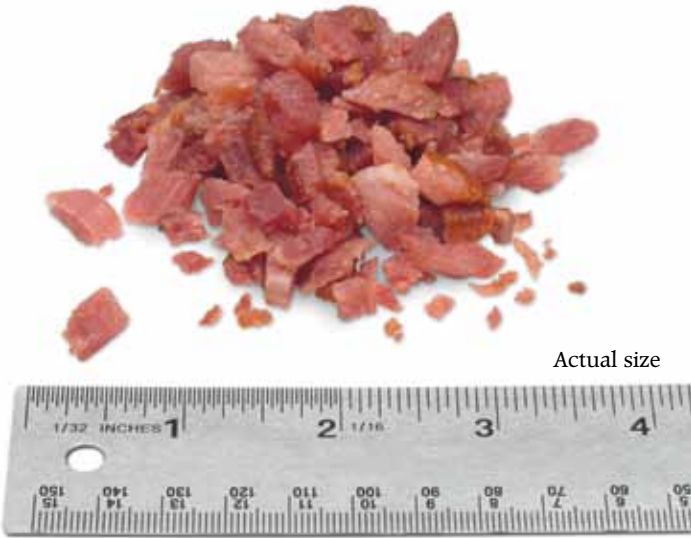
70247 159840  
Farmland Fully Cooked Round Bacon, 2/96  
Made from actual rolled bellies

Actual size



# DICED BACON

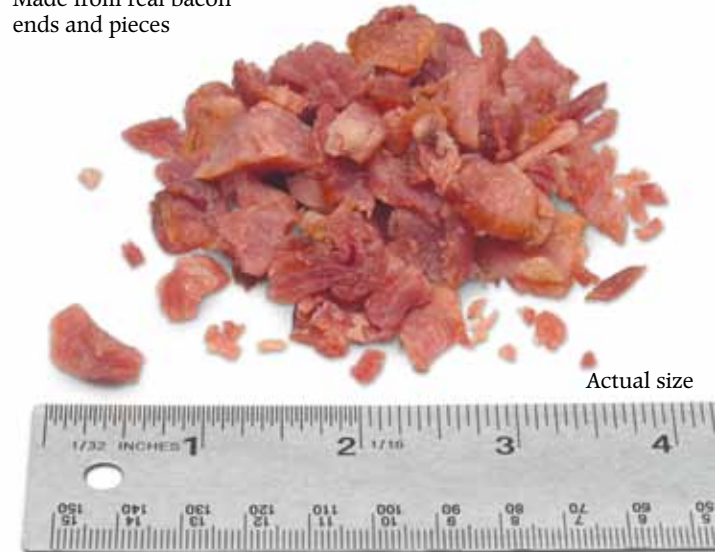
70247 172870  
Farmland® Fully Cooked Bacon Bits, 1/4" x 1/4"  
Made from real bacon ends and pieces



70247 172880  
Farmland Fully Cooked Fine Bacon Bits, 1/8" x 1/8"  
Made from real bacon ends and pieces



70247 172070  
Farmland Fully Cooked Diced Bacon Chips, 1/2" x 1/2"  
Made from real bacon ends and pieces



70247 170980  
Farmland Fully Cooked Bacon Pieces, diced, 1/2"  
Made from fully cooked  
bacon slices



## Gold Medal Single Sliced Bacon

| Description                                  | Item Code    | Avg Case Wt | Case Dimensions (L x W x H) | Case Cube | Case Tare | Pallet Pattern | Case GTIN      |
|--|--------------|-------------|-----------------------------|-----------|-----------|----------------|----------------|
| GM SS BACON, 18/22, GF, 15#                  | 70247 123240 | 15 lb.      | 18.375 x 11.375 x 4.750     | 0.575     | 1.75      | 8 x 12         | 00070247123244 |
| GM SS BACON, 14/18, 15#, Z                   | 70247 123257 | 15 lb.      | 19.875 x 11.375 x 4.250     | 0.556     | 1.50      | 8 x 12         | 00070247123251 |
| GM SS BACON, 18/22, 15#, Z                   | 70247 123297 | 15 lb.      | 19.875 x 11.375 x 4.250     | 0.556     | 1.65      | 8 x 12         | 00070247123299 |
| GM SS CERTIFIED BACON, 14/16, 15#, Z         | 70247 125237 | 15 lb.      | 19.875 x 11.375 x 4.250     | 0.556     | 1.35      | 8 x 11         | 00070247125231 |
| GM SS LOWER SODIUM BACON, 18/22, 15#, Z      | 70247 125467 | 15 lb.      | 18.375 x 11.375 x 4.750     | 0.575     | 1.65      | 8 x 11         | 00070247125460 |
| GM SS BACON, 14/18, GF, 15#                  | 70247 157250 | 15 lb.      | 18.375 x 11.375 x 4.750     | 0.575     | 1.65      | 8 x 12         | 00070247157256 |
| GM SS APPLE CIDER BACON, 18/22, GF, 15#      | 70247 171850 | 15 lb.      | 18.375 x 11.375 x 4.750     | 0.575     | 1.70      | 8 x 12         | 00070247171856 |
| GM SS APPLE CIDER BACON, 14/18, GF, 15#      | 70247171860  | 15 lb.      | 18.375 x 11.375 x 4.750     | 0.575     | 1.60      | 8 x 12         | 00070247171863 |
| GM SS APPLE CIDER BACON, 10/14, GF, 15#      | 70247 171960 | 15 lb.      | 18.375 x 11.375 x 4.750     | 0.575     | 1.50      | 8 x 12         | 00070247171962 |
| GM SS EXTRA SMOKE BACON, 22/26, 15#, Z       | 70247 174717 | 15 lb.      | 18.375 x 11.375 x 4.750     | 0.575     | 1.75      | 8 x 12         | 00070247174710 |
| GM SS APPLEWOOD SMOKED BACON, 6/8, GF, 2/10# | 70247 175050 | 20 lb.      | 19.125 x 11.125 x 6.375     | 0.785     | 1.65      | 8 x 8          | 10070247175059 |

## Gold Medal HRI Bacon

| Description                             | Item Code    | Avg Case Wt | Case Dimensions (L x W x H) | Case Cube | Case Tare | Pallet Pattern | Case GTIN      |
|---|--------------|-------------|-----------------------------|-----------|-----------|----------------|----------------|
| GM HRI DOUBLESMOKE BACON, 14/18, 15#, Z | 70247 158637 | 15 lb.      | 19.875 x 11.375 x 4.250     | 0.556     | 1.31      | 8 x 10         | 00070247158635 |
| GM HRI DOUBLESMOKE BACON, 18/22, 15#, Z | 70247 158647 | 15 lb.      | 19.875 x 11.375 x 4.250     | 0.556     | 1.31      | 8 x 10         | 00070247158642 |
| GM HRI PEPPER BACON, 14/16, 15#, Z      | 70247 159337 | 15 lb.      | 18.375 x 11.375 x 4.750     | 0.575     | 1.30      | 8 x 11         | 00070247159335 |
| GM DOUBLESMOKE HRI BACON, 10/14, 15#    | 70247 159960 | 15 lb.      | 19.875 x 11.375 x 4.250     | 0.556     | 1.41      | 8 x 11         | 00070247159960 |

## Silver Medal Single Sliced Bacon

| Description                                       | Item Code    | Avg Case Wt | Case Dimensions (L x W x H) | Case Cube | Case Tare | Pallet Pattern | Case GTIN      |
|---|--------------|-------------|-----------------------------|-----------|-----------|----------------|----------------|
| SM SS BACON, 18/22, GF, 15#                       | 70247 157650 | 15 lb.      | 19.875 x 11.375 x 4.750     | 0.621     | 1.75      | 8 x 12         | 00070247157652 |
| SM SS BACON, 14/18, GF, 15#, Z                    | 70247 158247 | 15 lb.      | 19.875 x 11.375 x 4.250     | 0.556     | 1.22      | 8 x 12         | 00070247158246 |
| SM SS BACON, 18/22, GF, 15#, Z                    | 70247 158257 | 15 lb.      | 19.875 x 11.375 x 4.250     | 0.556     | 1.30      | 8 x 12         | 00070247158253 |
| SM SS BACON, 22/26, 15#, Z                        | 70247 158267 | 15 lb.      | 19.875 x 11.375 x 4.250     | 0.556     | 1.44      | 8 x 12         | 00070247158260 |
| SM SS NORTHWEST BACON, 14/18, 15#                 | 70247 170300 | 15 lb.      | 18.375 x 11.375 x 4.750     | 0.575     | 1.43      | 8 x 11         | 00070247170309 |
| SM SS NORTHWEST BACON, 18/22, 15#, Z              | 70247 170317 | 15 lb.      | 18.375 x 11.375 x 4.750     | 0.575     | 1.48      | 8 x 11         | 00070247170316 |
| SM SS BACON, 9/12, 15#                            | 70247 171370 | 15 lb.      | 19.875 x 11.375 x 4.250     | 0.556     | 1.05      | 8 x 12         | 00070247171375 |
| SM SS CRUISE BACON, 18/22, 15#, Z                 | 70247 171567 | 15 lb.      | 19.875 x 11.375 x 4.250     | 0.556     | 1.47      | 8 x 12         | 00070247171566 |
| SM SS APPLE CIDER BACON, 14/18, 15#, Z            | 70247 171957 | 15 lb.      | 19.875 x 11.375 x 4.250     | 0.556     | 1.15      | 8 x 12         | 00070247171955 |
| SM SS APPLE CIDER BACON, 18/22, 15#               | 70247 172010 | 15 lb.      | 19.875 x 11.375 x 4.250     | 0.556     | 1.35      | 8 x 12         | 00070247172013 |
| SM SS BACON, 14/18, GF, 15#                       | 70247 173540 | 15 lb.      | 19.875 x 11.375 x 4.750     | 0.621     | 1.55      | 8 x 12         | 00070247173546 |
| FL SM NORTHEAST BACON, GF, 2/15#                  | 70247 181580 | 30 lb.      | 19.875 x 11.375 x 4.750     | 0.621     | 1.63      | 8 x 12         | 00070247181589 |
| SM SS APPLEWOOD SMOKED BACON, 14/18, 15#, Z       | 70247 174837 | 15 lb.      | 19.875 x 11.375 x 4.250     | 0.556     | 1.05      | 8 x 12         | 00070247174833 |
| SM SS APPLEWOOD SMOKED BACON, 18/22, 15#, Z       | 70247 174847 | 15 lb.      | 19.875 x 11.375 x 4.250     | 0.556     | 1.15      | 8 x 12         | 00070247174840 |
| SM SS LOWER SODIUM BACON, 8/11, GF, 15#           | 70247 175290 | 15 lb.      | 19.875 x 11.375 x 4.250     | 0.621     | 1.45      | 8 x 12         | 00070247175298 |
| SM SS APPLEWOOD SMOKED BACON, 14/18, GF, 2/15#, Z | 70247 174417 | 30 lb.      | 20.000 x 12.000 x 7.375     | 1.024     | 2.17      | 8 x 7          | 10070247174410 |

## Silver Medal HRI Bacon

| Description                                  | Item Code    | Avg Case Wt | Case Dimensions (L x W x H) | Case Cube | Case Tare | Pallet Pattern | Case GTIN      |
|--|--------------|-------------|-----------------------------|-----------|-----------|----------------|----------------|
| SM SHINGLE BACON, 14/18, 15#                 | 70247 123380 | 15 lb.      | 15.250 x 11.000 x 5.000     | 0.485     | 1.25      | 10 x 10        | 00070247123381 |
| SM SHINGLE BACON, 18/22, 15#                 | 70247 123390 | 15 lb.      | 15.250 x 11.000 x 5.000     | 0.485     | 1.30      | 10 x 10        | 00070247123398 |
| SM HRI BACON, 14/18, 15#, Z                  | 70247 159707 | 15 lb.      | 18.375 x 11.375 x 4.750     | 0.575     | 1.20      | 8 x 12         | 00070247159700 |
| SM HRI BACON, 18/22, 15#, Z                  | 70247 159717 | 15 lb.      | 18.375 x 11.375 x 4.750     | 0.575     | 1.41      | 8 x 12         | 00070247159717 |
| SM HRI NORTHWEST BACON, 14/18, GF, 15#       | 70247 170090 | 15 lb.      | 18.375 x 11.375 x 4.750     | 0.575     | 1.59      | 8 x 12         | 00070247170095 |
| SM HRI NORTHWEST BACON, 10/14, GF, 15#       | 70247 170100 | 15 lb.      | 18.375 x 11.375 x 4.750     | 0.575     | 1.40      | 8 x 12         | 00070247170101 |
| SM HRI NORTHWEST BACON, 18/22, GF, 15#       | 70247 170120 | 15 lb.      | 18.375 x 11.375 x 4.750     | 0.575     | 1.35      | 8 x 12         | 00070247170125 |
| FL DRAFT, HOTEL-STYLE BACON, 18/1# DRAFTS, Z | 70247 170587 | 18 lb.      | 18.625 x 11.750 x 5.125     | 0.649     | 1.25      | 8 x 10         | 00070247170583 |
| SM HRI DOUBLESMOKE BACON, 18/22, 30#, Z      | 70247 172517 | 30 lb.      | 25.063 x 11.500 x 5.813     | 0.970     | 3.00      | 6 x 8          | 00070247172518 |
| SM HRI DOUBLESMOKE BACON, 14/18, 30#, Z      | 70247 172527 | 30 lb.      | 25.063 x 11.500 x 5.813     | 0.970     | 3.00      | 6 x 8          | 00070247172525 |
| SM HRI DOUBLESMOKE BACON, 10/14, 30#, Z      | 70247 172767 | 30 lb.      | 25.063 x 11.500 x 5.813     | 0.970     | 3.00      | 6 x 8          | 00070247172761 |
| SM+ HRI HONEY-CURED BACON, 14/16, GF, 15#    | 70247 174210 | 15 lb.      | 19.875 x 11.375 x 4.250     | 0.556     | 1.30      | 8 x 12         | 00070247174215 |

## Bronze Medal Single Sliced Bacon

| Description                       | Item Code    | Avg Case Wt | Case Dimensions (L x W x H) | Case Cube | Case Tare | Pallet Pattern | Case GTIN      |
|-----------------------------------|--------------|-------------|-----------------------------|-----------|-----------|----------------|----------------|
| BM SS BACON, 16/22, 25#, Z        | 70247 159557 | 25 lb.      | 18.875 x 11.375 x 7.250     | 0.901     | 2.25      | 8 x 7          | 00070247159557 |
| BM SS BACON, 16/22, 25#           | 70247 170010 | 15 lb.      | 19.875 x 11.375 x 4.250     | 0.556     | 1.29      | 8 x 12         | 00070247170019 |
| FARMSTEAD SELECT SS BACON, 15#, Z | 52076 174337 | 15 lb.      | 19.875 x 11.375 x 4.250     | 0.556     | 1.38      | 8 x 11         | 00052076174338 |

## Bronze Medal HRI Bacon

| Description                                | Item Code    | Avg Case Wt | Case Dimensions (L x W x H) | Case Cube | Case Tare | Pallet Pattern | Case GTIN      |
|--|--------------|-------------|-----------------------------|-----------|-----------|----------------|----------------|
| BM HRI BACON, 18/22, 25#                   | 70247 123190 | 25 lb.      | 19.125 x 11.125 x 6.375     | 0.785     | 1.78      | 8 x 8          | 00070247123190 |
| BM HRI BACON, 14/18, 25#                   | 70247 123410 | 25 lb.      | 19.125 x 11.125 x 6.375     | 0.785     | 1.77      | 8 x 8          | 00070247123411 |
| BM HRI BACON, 14/18, 15#                   | 70247 123890 | 15 lb.      | 18.375 x 11.375 x 4.750     | 0.575     | 1.30      | 8 x 11         | 00070247123893 |
| BM HRI BACON, 18/22, 15#                   | 70247 123900 | 15 lb.      | 18.375 x 11.375 x 4.750     | 0.575     | 1.32      | 8 x 11         | 00070247123909 |
| BM HRI BACON, 14/18, PRINTED LABEL,GF, 15# | 70247 175690 | 15 lb.      | 19.875 x 11.375 x 4.750     | 0.621     | 1.40      | 8 x 12         | 00070247175694 |
| BM HRI BACON, 18/22, PRINTED LABEL,GF, 15# | 70247 175700 | 15 lb.      | 19.875 x 11.375 x 4.750     | 0.621     | 1.40      | 8 x 12         | 00070247175700 |

## Sliced Slab Bacon

| Description                       | Item Code    | Avg Case Wt | Case Dimensions (L x W x H) | Case Cube | Case Tare | Pallet Pattern | Case GTIN      |
|-----------------------------------|--------------|-------------|-----------------------------|-----------|-----------|----------------|----------------|
| MR SLICED SLAB BACON, 14/18, 30#  | 70247 123420 | 30 lb.      | 18.875 x 11.375 x 7.250     | 0.901     | 1.90      | 8 x 7          | 00070247123428 |
| MR SLICED SLAB BACON, 18/22, 30#  | 70247 154680 | 30 lb.      | 18.875 x 11.375 x 7.250     | 0.901     | 1.90      | 8 x 7          | 00070247154682 |
| MR SLICED SLAB BACON, 10/14, 30#  | 70247 158510 | 30 lb.      | 18.875 x 11.375 x 7.250     | 0.901     | 1.90      | 8 x 7          | 00070247158512 |
| ST. LOUIS BACON, 14/18, 25#       | 70247 123460 | 25 lb.      | 19.125 x 11.125 x 6.375     | 0.785     | 1.35      | 8 x 7          | 00070247123466 |
| LAUREL SLICED SLAB BACON, 15#, Z  | 52076 171637 | 15 lb.      | 19.875 x 11.375 x 4.750     | 0.621     | 1.40      | 8 x 12         | 00052076171634 |
| LAUREL SLICED SLAB BACON          | 52076 900580 | 30 lb.      | 18.875 x 11.375 x 7.250     | 0.901     | 1.88      | 8 x 7          | 00052076900586 |
| LAUREL SLICED SLAB BACON, 9/12, Z | 52076 172147 | 15 lb.      | 19.875 x 11.375 x 4.750     | 0.621     | 1.38      | 8 x 12         | 00052076172143 |

## Fully Cooked Bacon

| Description                                     | Item Code    | Avg Case Wt | Case Dimensions (L x W x H) | Case Cube | Case Tare | Pallet Pattern | Case GTIN      |
|---|--------------|-------------|-----------------------------|-----------|-----------|----------------|----------------|
| GM FC WAVY BACON, REGULAR, 2/150 CT             | 70247 157940 | 3.75 lb.    | 14.750 x 10.250 x 3.250     | 0.284     | 1.00      | 11 x 20        | 10070247157949 |
| GM FC SUPER THICK SLICE BACON, 1/150 CT         | 70247 171050 | 5.4 lb.     | 14.750 x 10.250 x 3.250     | 0.284     | 1.00      | 11 x 20        | 10070247171051 |
| GM FC NATURAL SMOKE BACON, REGULAR, 2/150 CT    | 70247 171780 | 3.75 lb.    | 14.750 x 10.250 x 3.250     | 0.284     | 1.00      | 11 x 20        | 10070247171785 |
| SM FC BACON, REGULAR, 2/150 CT                  | 70247 125000 | 3.75 lb.    | 14.750 x 10.250 x 3.250     | 0.284     | 1.00      | 11 x 20        | 10070247125009 |
| SM FC BACON, THICK SLICE, 2/150 CT              | 70247 157030 | 5 lb.       | 14.750 x 10.250 x 3.250     | 0.284     | 1.00      | 11 x 20        | 10070247157031 |
| SM FC ROUND BACON, 2/96 CT                      | 70247 159840 | 5.25 lb.    | 14.620 x 10.000 x 3.750     | 0.317     | 1.00      | 12 x 17        | 10070247159844 |
| SM FC APPLEWOOD SMOKED BACON, REGULAR, 2.150 CT | 70247 175100 | 3.75 lb.    | 14.750 x 10.250 x 3.250     | 0.284     | 1.00      | 11 x 20        | 10070247175103 |
| BM FC REGULAR BACON, 2/150 CT                   | 70247 172330 | 2.75 lb.    | 15.000 x 9.375 x 3.000      | 0.244     | 0.75      | 11 x 20        | 10070247172331 |
| BM FC ROUND BACON, 2/96 CT                      | 70247 172730 | 3 lb.       | 15.000 x 9.500 x 3.000      | 0.247     | 1.00      | 12 x 17        | 10070247172737 |
| FC BACON PIECES, 2/5#                           | 70247 170980 | 10 lb.      | 15.500 x 12.000 x 4.870     | 0.524     | 1.00      | 8 x 14         | 10070247170986 |
| FC DICED BACON CHIPS, 2/5#                      | 70247 172070 | 10 lb.      | 13.375 x 11.375 x 6.625     | 0.583     | 1.00      | 12 x 10        | 10070247172072 |
| FC BACON BITS, 2/5#                             | 70247 172870 | 10 lb.      | 15.875 x 12.375 x 5.500     | 0.625     | 1.00      | 9 x 12         | 10070247172874 |
| FC FINE BACON BITS, 2/5#                        | 70247 172880 | 10 lb.      | 13.357 x 11.375 x 6.625     | 0.583     | 1.00      | 12 x 9         | 10070247172881 |

For nutritional information, please contact your Farmland sales representative.





**1-888-FARMLAND**

Our toll-free lines are answered  
Monday through Friday from 8:00 a.m. to 4:30 p.m., CST.

For additional assistance, contact your local Farmland representative.

Visit our website at [www.farmlandfoodservice.com](http://www.farmlandfoodservice.com)