

# OPERATOR

## Operators Save Up to \$250!



### FEATURED PRODUCTS

May 1–August 31, 2026

Smithfield		BACON - RTC STRIPS		
ITEM CODE	PRODUCT DESCRIPTION	\$/CS	CASES	TOTAL
70247158635	SMITHFIELD RTC BACON, GOLD MEDAL, HRI SLAB, SUGAR CURE, DOUBLE HICKORY SMOKED, 14-18 SLICES PER LB, 15 LB CASE, FROZEN	\$2.00		
70247158642	SMITHFIELD RTC BACON, GOLD MEDAL, HRI SLAB, SUGAR CURE, DOUBLE HICKORY SMOKED, 18-22 SLICES PER LB, 15 LB CASE, FROZEN	\$2.00		
10070100065459	SMITHFIELD RTC BACON, GOLD MEDAL, APPLEWOOD SMOKED, SINGLE SLICE, 14-17 SLICES PER LB, 15 LB, GAS-FLUSHED	\$2.00		
70247123244	SMITHFIELD RTC BACON, GOLD MEDAL, SINGLE SLICE, 18-22 SLICES PER LB, 15 LB, GAS-FLUSHED	\$2.00		
70800179077	SMITHFIELD RTC BACON, PLATINUM, APPLEWOOD SMOKED, LOG, SINGLE SLICE, 10-14 SLICES PER LB, 15 LB, GAS-FLUSHED	\$2.00		

Smithfield		READY TO EAT BACON: STRIPS		
ITEM CODE	PRODUCT DESCRIPTION	\$/CS	CASES	TOTAL
20070800748802	SMITHFIELD SELECT PLATINUM FULLY COOKED BACON 18/22 STYLE	\$5.00		
20070800748819	SMITHFIELD SELECT PLATINUM FULLY COOKED BACON 14/18 STYLE	\$5.00		

Smithfield		READY TO EAT BACON: DICED, CHIPS, BITS		
ITEM CODE	PRODUCT DESCRIPTION	\$/CS	CASES	TOTAL
20027815003402	SMITHFIELD FULLY COOKED BACON CHIPS, 1/2" DICED, 2/5 LB	\$5.00		
20043200126518	SMITHFIELD FULLY COOKED BACON BITS, 1/2" DICED, 2/5 LB, ALL-NATURAL	\$5.00		
10043200126771	SMITHFIELD RTE BACON TOPPING, GAS FLUSHED, ALL NATURAL UNCURED 1/4" DICE, 28% YIELD, 2/5 LB PACKAGES, 10 LB CASE	\$5.00		
10043200122964	SMITHFIELD FULLY COOKED BACON, 1/4" BITS, 2/5 LB	\$5.00		
10043200126177	SMITHFIELD FULLY COOKED BACON, 3/8" APPLEWOOD SMOKED, TOPPING, 2/5 LB	\$5.00		

Smithfield		SMOKED BONELESS HAM		
ITEM CODE	PRODUCT DESCRIPTION	\$/CS	CASES	TOTAL
90070247128594	SMITHFIELD ORIGINAL PIT HAM, SILVER MEDAL, SMOKED, 2/14 LB, RANDOM WEIGHT	\$5.00		
90070247195558	SMITHFIELD CARVEMASTER APPLEWOOD HAM WITH NATURAL JUICES, GOLD MEDAL, 2/7.65 LB, RANDOM WEIGHT	\$5.00		
90070247127535	SMITHFIELD PIT HAM, BRONZE MEDAL, HAM AND WATER PRODUCT, 2/15.65 LB, RANDOM WEIGHT	\$5.00		
90070247190454	SMITHFIELD FLAT HAM, BRONZE MEDAL, HAM AND WATER, 2/11LB, RANDOM WEIGHT	\$5.00		

Smithfield		COOK IN BAG HAM		
ITEM CODE	PRODUCT DESCRIPTION	\$/CS	CASES	TOTAL
10070247290189	SMITHFIELD CHOPPED HAM, WATER ADDED, 5/10 LB	\$2.00		
10070247290141	SMITHFIELD HONEY HAM, BONELESS, WATER ADDED, 2/13 LB, RANDOM WEIGHT	\$2.00		
10070247290097	SMITHFIELD COOKED HAM, 4X4, WATER ADDED, 5/10 LB	\$2.00		
10070247193831	SMITHFIELD COOKED HAM, 4X6, WATER ADDED, 2/13 LB	\$2.00		
10070247193817	SMITHFIELD COOKED HAM, 4X6, HAM AND WATER, 2/13 LB	\$2.00		

Smithfield		FRANKS		
ITEM CODE	PRODUCT DESCRIPTION	\$/CS	CASES	TOTAL
70247811004	SMITHFIELD MEAT HOT DOGS, SILVER MEDAL, 10/1, 2/5 LB, CHILD NUTRITION, FROZEN	\$5.00		
70247812544	SMITHFIELD 6" MEAT HOT DOGS, BRONZE MEDAL, 8/1, 10 LB, CHILD NUTRITION, FROZEN	\$5.00		

Smithfield		FRESH BREAKFAST SAUSAGE		
ITEM CODE	PRODUCT DESCRIPTION	\$/CS	CASES	TOTAL
70247131096	SMITHFIELD SAUSAGE LINKS, SILVER MEDAL, 1 OZ LINK, 10 LB, FROZEN	\$4.00		
70247133359	SMITHFIELD SAUSAGE PATTY, FMX, SILVER MEDAL, 2 OZ, 12 LB, FROZEN	\$4.00		
70247134301	SMITHFIELD SAUSAGE PATTY, FMX, SILVER MEDAL, 4 OZ, 12 LB, FROZEN	\$4.00		
70100020208	SMITHFIELD SAUSAGE ROLL, SILVER MEDAL, 8/3 LB, FROZEN	\$8.00		
10070247130102	SMITHFIELD SAUSAGE ROLL, SILVER MEDAL, 58% LEAN, 2/6 LB, FROZEN	\$5.00		
20070800234398	SMITHFIELD GROUND CHORIZO ROLL, ALL NATURAL, 4/2.5 LB ROLLS, 10 LB CASE, FROZEN *NEW ITEM*	\$5.00		

Smithfield		SMOKED SAUSAGE		
ITEM CODE	PRODUCT DESCRIPTION	\$/CS	CASES	TOTAL
10070100044171	SMITHFIELD STAGECOACH PORK SMOKED SAUSAGE, ROPE, 8/3.25 LB, FROZEN	\$5.00		
70247135292	SMITHFIELD KIELBASA, GOLD MEDAL, 5/1, 6", 10 LB, FROZEN	\$5.00		

Margherita		NO CHAR PEPPERONI		
ITEM CODE	PRODUCT DESCRIPTION	\$/CS	CASES	TOTAL
20027815220106	MARGHERITA PEPPERONI, SLICED, 14-16 SLICES, 2/12.5 LB	\$5.00		
20027815220144	MARGHERITA PEPPERONI, SLICED, 14-16 COUNT, 2/5 LB	\$2.00		
20027815021796	MARGHERITA DICED PEPPERONI, GAS FLUSHED, FROZEN, 2/5 LB BAGS, 10 LB CASE	\$2.00		
20027815021130	MARGHERITA JALAPENO PEPPERONI, SLICED, GAS FLUSHED, NO CHAR, 2/5 LB POUCHES, 10 LB CASE	\$2.00		

Margherita		CUP 'N CRISP PEPPERONI		
ITEM CODE	PRODUCT DESCRIPTION	\$/CS	CASES	TOTAL
10043200154309	MARGHERITA CUP N CRISP SPICY PEPPERONI, SLICED, 38MM, 2/12.5 LB, GAS-FLUSHED, FROZEN	\$5.00		
20043200154313	MARGHERITA CUP N CRISP SPICY PEPPERONI SLICED 38MM, 2/5 LB, GAS-FLUSHED	\$2.00		

Margherita		CUP 'N CHAR PEPPERONI		
ITEM CODE	PRODUCT DESCRIPTION	\$/CS	CASES	TOTAL
20027815021574	MARGHERITA THICK CUT CUP AND CHAR PEPPERONI, NC, SLICED, GAS FLUSHED, 10-12 SLICES PER OZ, 2/5 LB POUCHES, 10 LB CASE	\$2.00		
20027815220168	MARGHERITA CUP N CHAR PEPPERONI, COLLAGEN CASING, SLICED, 2/12.5 LB	\$5.00		

Margherita		SPECIALITY ITALIAN		
ITEM CODE	PRODUCT DESCRIPTION	\$/CS	CASES	TOTAL
20027815001613	MARGHERITA CAPICOLA, SLICED, 5/2 LB	\$2.00		
10038616300389	MARGHERITA SLICED GENOA SALAMI, SANDWICH SIZED, 8/2 LB, RANDOM WEIGHT	\$2.00		
10038616300372	MARGHERITA SLICED PEPPERONI, 3 INCH SANDWICH SIZED, 8/2 LB	\$2.00		

Kretschmar		KRETSCHMAR		
ITEM CODE	PRODUCT DESCRIPTION	\$/CS	CASES	TOTAL
90039073042085	KRETSCHMAR OVEN ROASTED TURKEY BREAST, 2/7.89#, OFF THE BONE, RANDOM WEIGHT	\$1.00		
90039073685206	KRETSCHMAR ROASTED CHICKEN BREAST, 3/5.33#, RANDOM WEIGHT	\$1.00		
90039073019070	KRETSCHMAR BEEF BOLOGNA HALF STICK, 4/4.75#, RANDOM WEIGHT	\$1.00		
90039073042016	KRETSCHMAR BONELESS HAM, WHOLE, OFF THE BONE, 2 PIECE, FULLY COOKED, NATURAL JUICES, RANDOM WEIGHT	\$1.00		
90039073930245	KRETSCHMAR ROAST BEEF, TOP ROUND LONDON BROIL, 1 PIECE PER BAG, 2 BAGS PER BOX, FULLY COOKED, RANDOM WEIGHT	\$1.00		

▶ NEW ITEM!

# OPERATOR

## Operators Save Up to \$250!



### FEATURED PRODUCTS

May 1–August 31, 2026

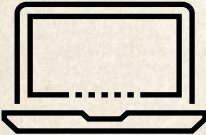
Smithfield		SPECIALTY CUT		
ITEM CODE	PRODUCT DESCRIPTION	\$/CS	CASES	TOTAL
10070247141610	SMITHFIELD DICED HAM, SILVER MEDAL, SMOKED, WATER ADDED, 1/4 INCH CUBES, 2/5 LB, FROZEN	\$5.00		
90070247127054	SMITHFIELD CANADIAN HAM, GOLD MEDAL, 95% FAT FREE, 4/3.85 LB, RANDOM WEIGHT	\$5.00		
70247127877	SMITHFIELD SLICED HAM, BRONZE MEDAL, SMOKED, WATER ADDED, 2 OZ SLICES, 4/3 LB, FROZEN	\$5.00		
20070247196365	SMITHFIELD SLICED HAM STEAK, GOLD MEDAL, SMOKED, WATER ADDED, 4OZ SLICES, 4/6 LB, FROZEN	\$5.00		
10070247821499	SMITHFIELD CANADIAN HAM, GOLD MEDAL, SMOKED, 0.75OZ SLICES, 6/2 LB, FROZEN	\$5.00		

Smithfield		FULLY COOKED BREAKFAST SAUSAGE PATTIES		
ITEM CODE	PRODUCT DESCRIPTION	\$/CS	CASES	TOTAL
25468111006	SMITHFIELD PRE COOKED PORK SAUSAGE PATTIES, SILVER MEDAL, CHILD NUTRITION LABELED, 2OZ PATTIES, 1 BAG, 10 LB CASE, FROZEN	\$2.00		
70247138149	SMITHFIELD PRE COOKED PORK SAUSAGE PATTIES, SILVER MEDAL, 1.5 OZ PATTIES, 1 BAG, 10 LB CASE, FROZEN	\$2.00		
70247138156	SMITHFIELD PRE COOKED PORK SAUSAGE PATTIES, SILVER MEDAL, 2 OZ PATTIES, 1 BAG, 10 LB CASE, FROZEN	\$2.00		
70247138408	SMITHFIELD PRE COOKED PORK SAUSAGE PATTIES, SILVER MEDAL, 2 OZ WIDE PATTIES, 1 BAG, 10 LB CASE, FROZEN	\$2.00		

Eckrich		LUNCHMEAT/COLD CUTS		
ITEM CODE	PRODUCT DESCRIPTION	\$/CS	CASES	TOTAL
90027815021610	ECKRICH SMOKED BOLOGNA, 4 COUNT, RANDOM WEIGHT	\$2.00		
90046600024629	ECKRICH BOLOGNA, 4 COUNT, RANDOM WEIGHT	\$1.00		
90046600024711	ECKRICH BEEF BOLOGNA, 4 COUNT, RANDOM WEIGHT	\$1.00		
90046600025152	ECKRICH GARLIC BOLOGNA, 4 COUNT, RANDOM WEIGHT	\$1.00		

Smithfield		FULLY COOKED BREAKFAST SAUSAGE LINKS		
ITEM CODE	PRODUCT DESCRIPTION	\$/CS	CASES	TOTAL
70247137623	SMITHFIELD PRE COOKED PORK SAUSAGE LINKS, SILVER MEDAL, SKIN ON, 1.6 OZ LINKS, 1 BAG, 10 LB CASE	\$3.00		
70247137616	SMITHFIELD PRE COOKED PORK SAUSAGE LINKS, SILVER MEDAL, SKIN ON, 0.8 OZ LINKS, 1 BAG, 10 LB CASE	\$3.00		
70247138170	SMITHFIELD FULLY COOKED SKINLESS SAUSAGE LINK, SILVER MEDAL, 20/1 LB, 10 LB, FROZEN	\$3.00		

**REDEEM THIS REBATE IN 10 MINUTES OR LESS! SUBMIT ALL THE FORMS ONLINE VIA RAPIDREBATE.NET!**



**STEP 1**  
Log on to  
RapidRebate.net



**STEP 2**  
Add product info  
& upload invoices



**STEP 3**  
Submit &  
check status

**INSTRUCTIONS FOR SUBMITTING THIS REBATE:**

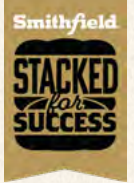
1	Use the grids on the front and back of this page to indicate the number of cases of each product code purchased during the eligible period.
2	Put the total number of cases purchased in the boxes below.
3	Put the total \$ amount of the requested rebate in the boxes below.
4	Complete the contact info (below) and segment info (right) and mail the form, along with required printout/invoice copies, to the address at right.

**Terms and Conditions:**  
Offer limited to foodservice operators only. Chain operators must participate as single units. Contracted chain and bid accounts cannot participate. This coupon may be redeemed for a minimum of \$20 up to \$250 per individual foodservice operator. Submit this rebate with copies of distributor invoices or distributor printouts verifying valid products were purchased between May 1–August 31, 2026. DISTRIBUTOR PRINTOUTS OR INVOICES MUST INCLUDE THE FOLLOWING OPERATOR INFORMATION: Operator Name, Product Purchased, Number of Cases Purchased, Date the Product was Purchased, Invoice Number and Physical Address. Operators must fill out rebate coupon themselves. Distributor tracking reports do not qualify. Bulk redemptions by distributors and/or DSRs are not allowed. Request must be postmarked no later than September 30, 2026. Offer not redeemable in conjunction with any other offer. Operators may submit more than once until the maximum dollar amount is met; however, the initial submission must meet the minimum requirement of \$20. Allow 10–12 weeks for delivery. Incomplete or incorrect submissions will delay payment. Void where restricted, prohibited or banned.

PLEASE MAIL THIS COUPON WITH COPIES OF DISTRIBUTOR INVOICES TO:

SMITHFIELD CULINARY  
STACKED FOR SUCCESS COUPON REDEMPTION  
PO BOX 552  
TRAVERSE CITY, MI 49685

REBATE QUESTIONS? CALL 1-877-570-5504



NOW SUBMIT YOUR REBATES ONLINE AT [WWW.RAPIDREBATE.NET](http://WWW.RAPIDREBATE.NET)

**COUPON CODE: SFS260PR**

PLEASE CHECK THE MARKET SEGMENT YOUR OPERATION/TYPE OF RESTAURANT BELONGS IN:

Are you a new Smithfield Culinary customer   
or a current Smithfield Culinary customer

**COMMERCIAL**

- Full Service
- Casual Theme
- Family
- Upscale/Fine Dining
- C-Store
- Hotel/Motel/Resort

**OWNERSHIP**

- Independent
- Local/Regional Chain
- National Chain

**NON-COMMERCIAL**

- College/University
- Elementary/Secondary School
- Business & Industry
- Recreational/Entertainment
- Transportation Foodservice
- Military/Correctional

**OWNERSHIP**

- Contract Management
- Self-Operated

Number of meals served per day:  
Breakfast \_\_\_\_\_ Lunch \_\_\_\_\_ Dinner \_\_\_\_\_

Approximate dollar volume annual food/beverage purchases: \_\_\_\_\_

**MAXIMUM PAYOUT IS \$250 / MINIMUM PAYOUT IS \$20**

# of \$1 CS:	x \$1/CS = Total \$:	# of \$4 CS:	x \$4/CS = Total \$:
# of \$2 CS:	x \$2/CS = Total \$:	# of \$5 CS:	x \$5/CS = Total \$:
# of \$3 CS:	x \$3/CS = Total \$:	# of \$8 CS:	x \$8/CS = Total \$:

**CHECK WILL BE MAILED TO THE ADDRESS SHOWN BELOW (PLEASE PRINT)**

OPERATION NAME:	CONTACT NAME:	
E-MAIL ADDRESS:		
OPERATION ADDRESS:		
CITY:	STATE:	ZIP:
TELEPHONE NUMBER:	FAX NUMBER:	
DISTRIBUTOR:	DSR NAME:	

YOU CAN ALSO SUBMIT OFFER FORM AND COPIES OF INVOICES ONLINE AT [WWW.RAPIDREBATE.NET](http://WWW.RAPIDREBATE.NET)  
FOR MORE INFORMATION ON SMITHFIELD CULINARY PRODUCTS, PROMOTIONS, RECIPES OR MARKETING MATERIALS,  
CONTACT YOUR SMITHFIELD CULINARY REPRESENTATIVE/BROKER OR CALL 1-888-327-6526 [WWW.SMITHFIELD.CULINARY.COM/STACKED](http://WWW.SMITHFIELD.CULINARY.COM/STACKED)